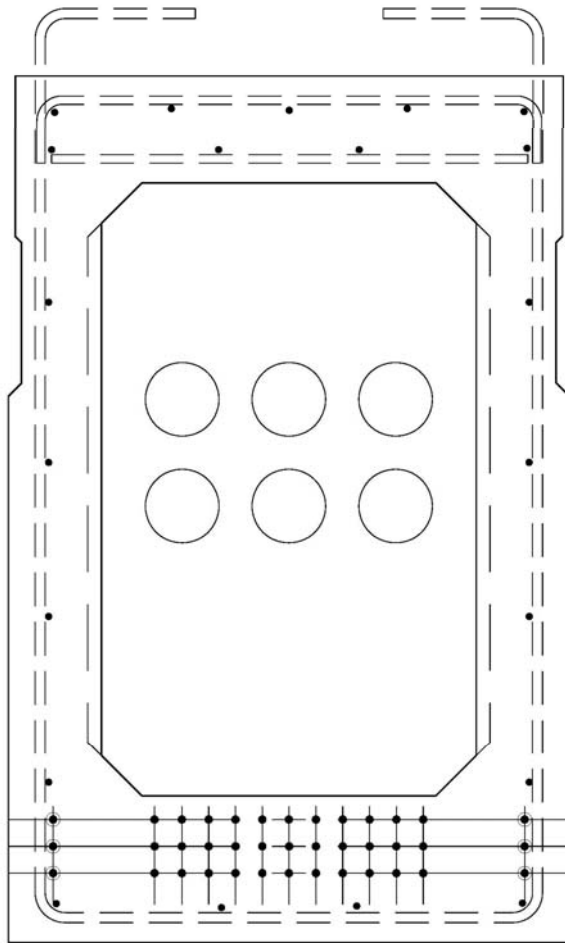
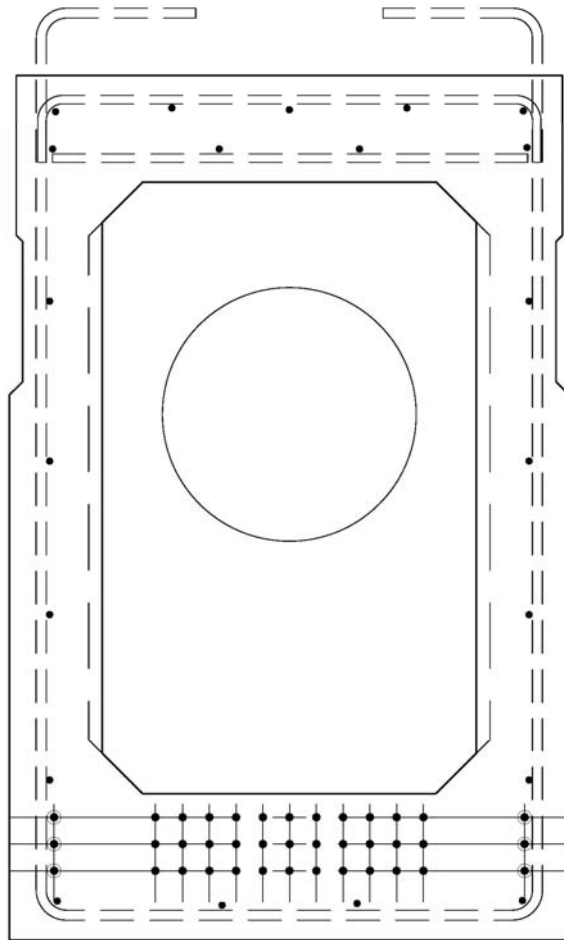




Typical Handling of Utilities in Precast Bridge Structures



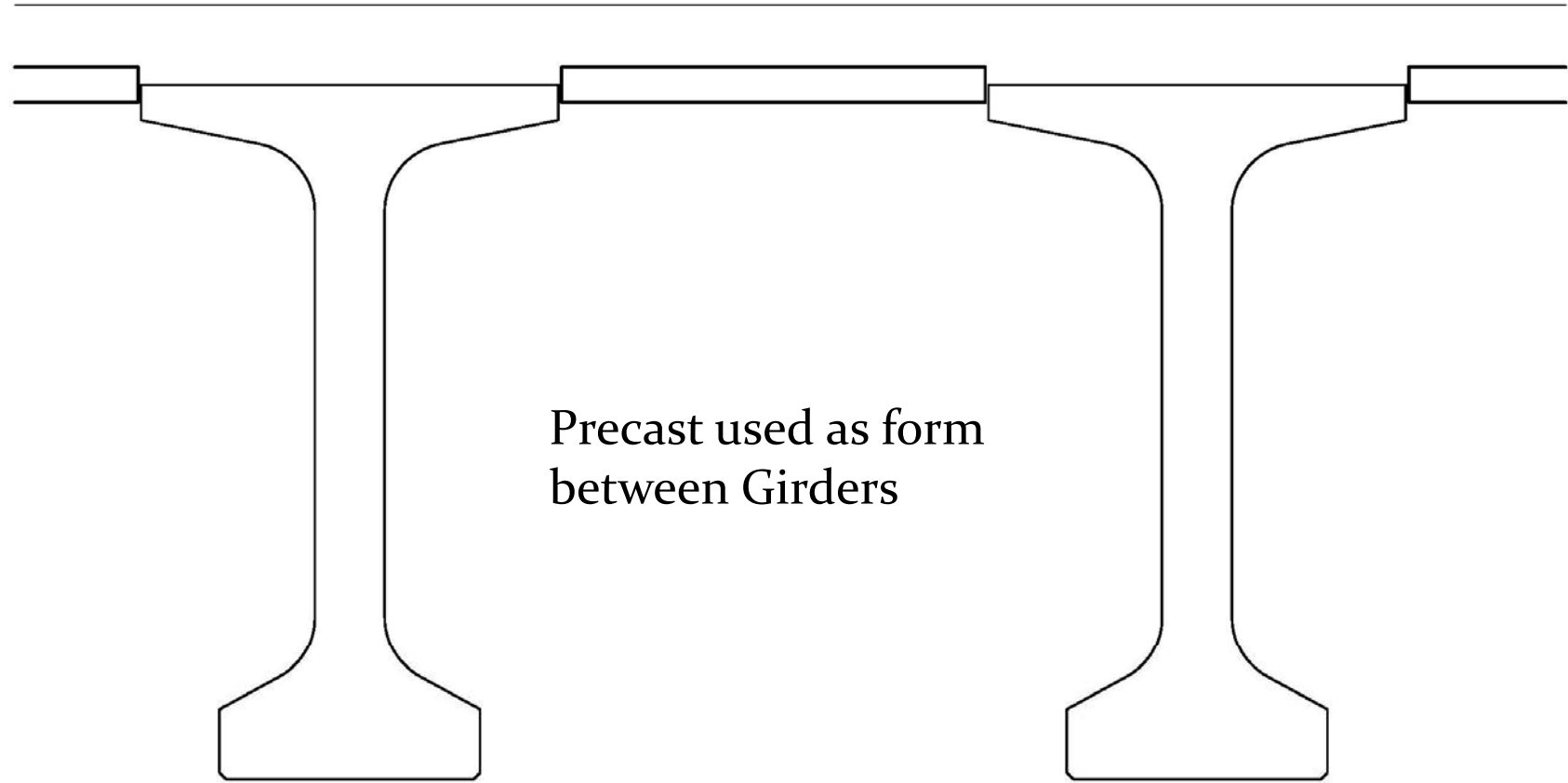
1. Blockout can be a blockout for another pipe placed in field or used as the pipe



1. Blockout can be a blockout for another pipe placed in field or used as the pipe
2. Can be placed as one large blockout with multiply smaller pipe placed in field – square or round



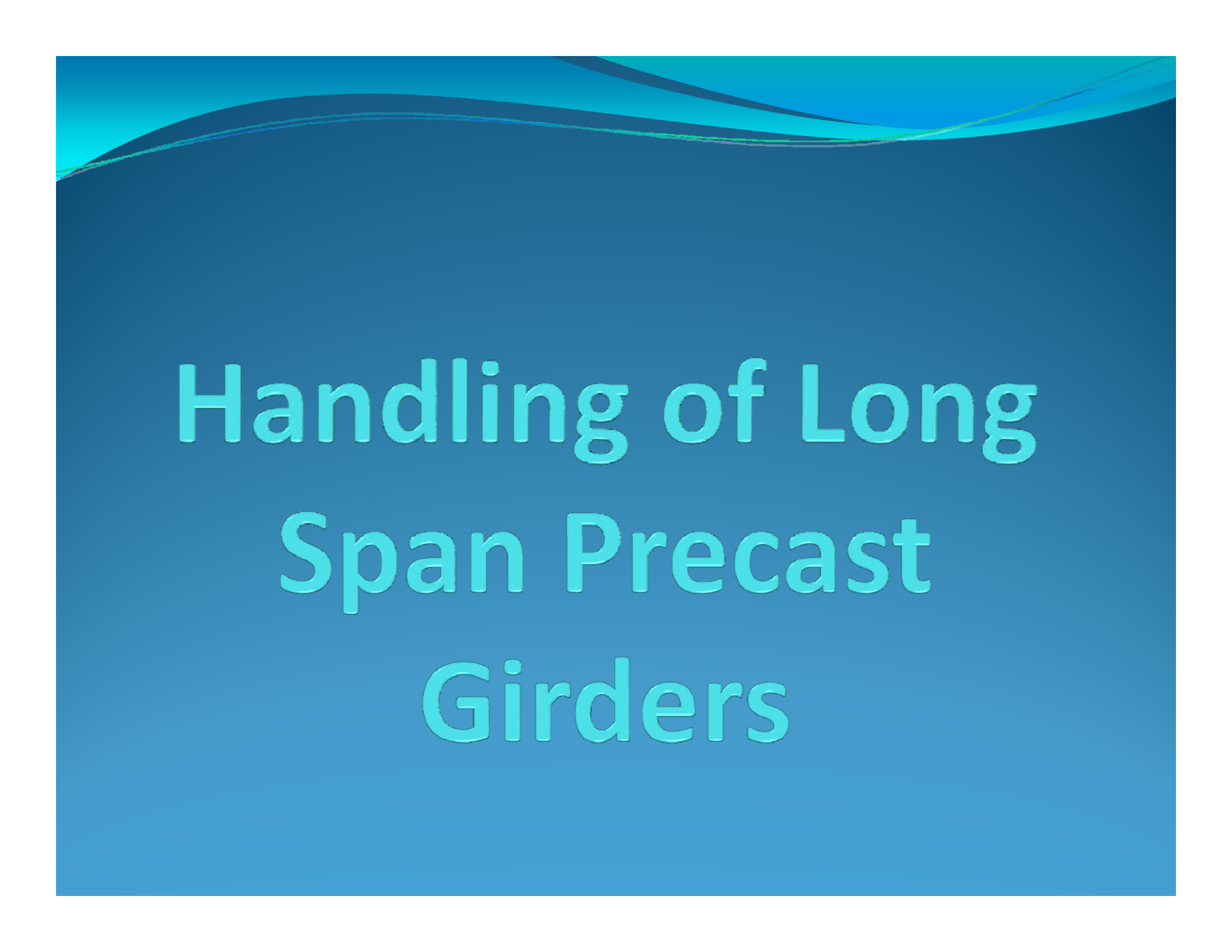
Stay-In-Place Precast Full Depth Bridge Deck Panels



Precast used as form
between Girders

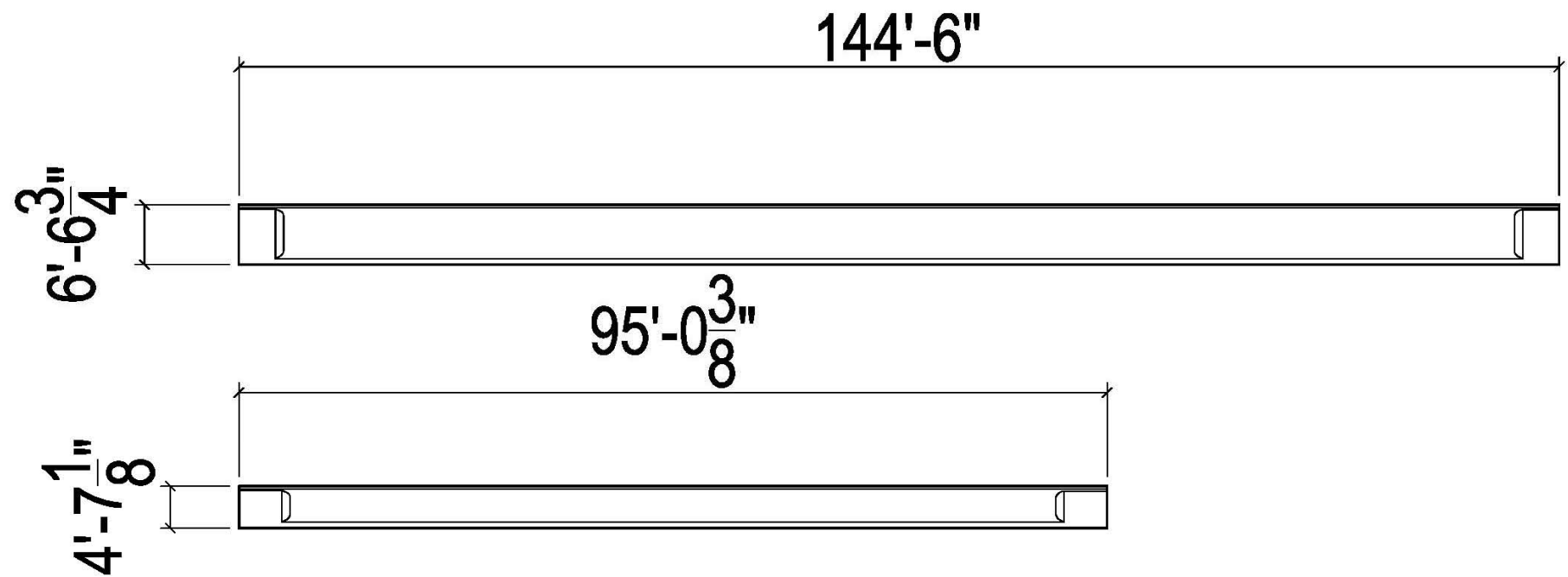


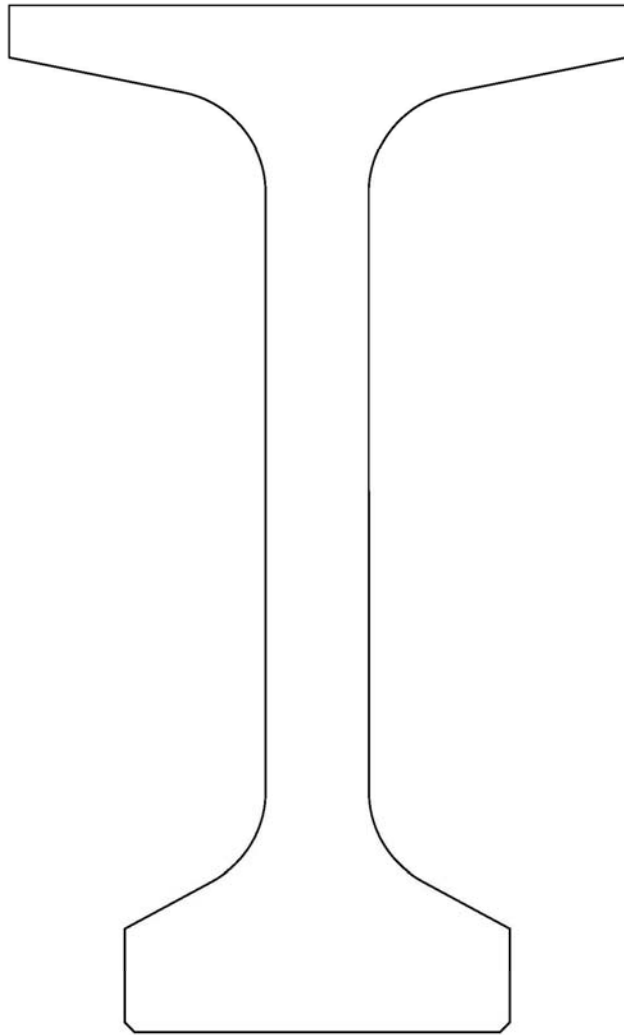
Precast used as slab
with pour strip above
the Girders

The background is a solid blue gradient. At the top, there are several thin, wavy lines in lighter shades of blue and cyan, creating a sense of movement or a horizon line. The text is centered and reads:

Handling of Long Span Precast Girders

Bulb-T Girders



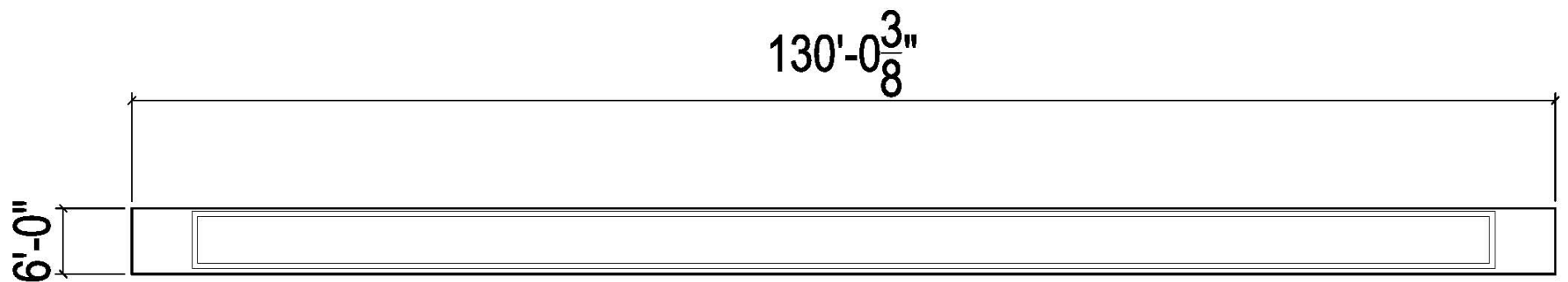


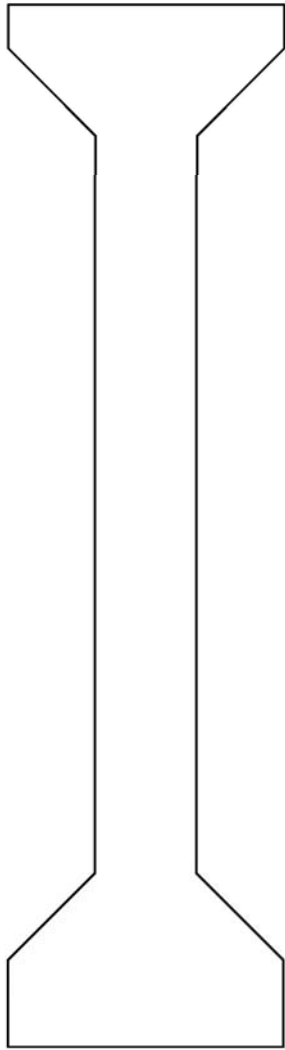
- Strong Section
- Stable for Handling



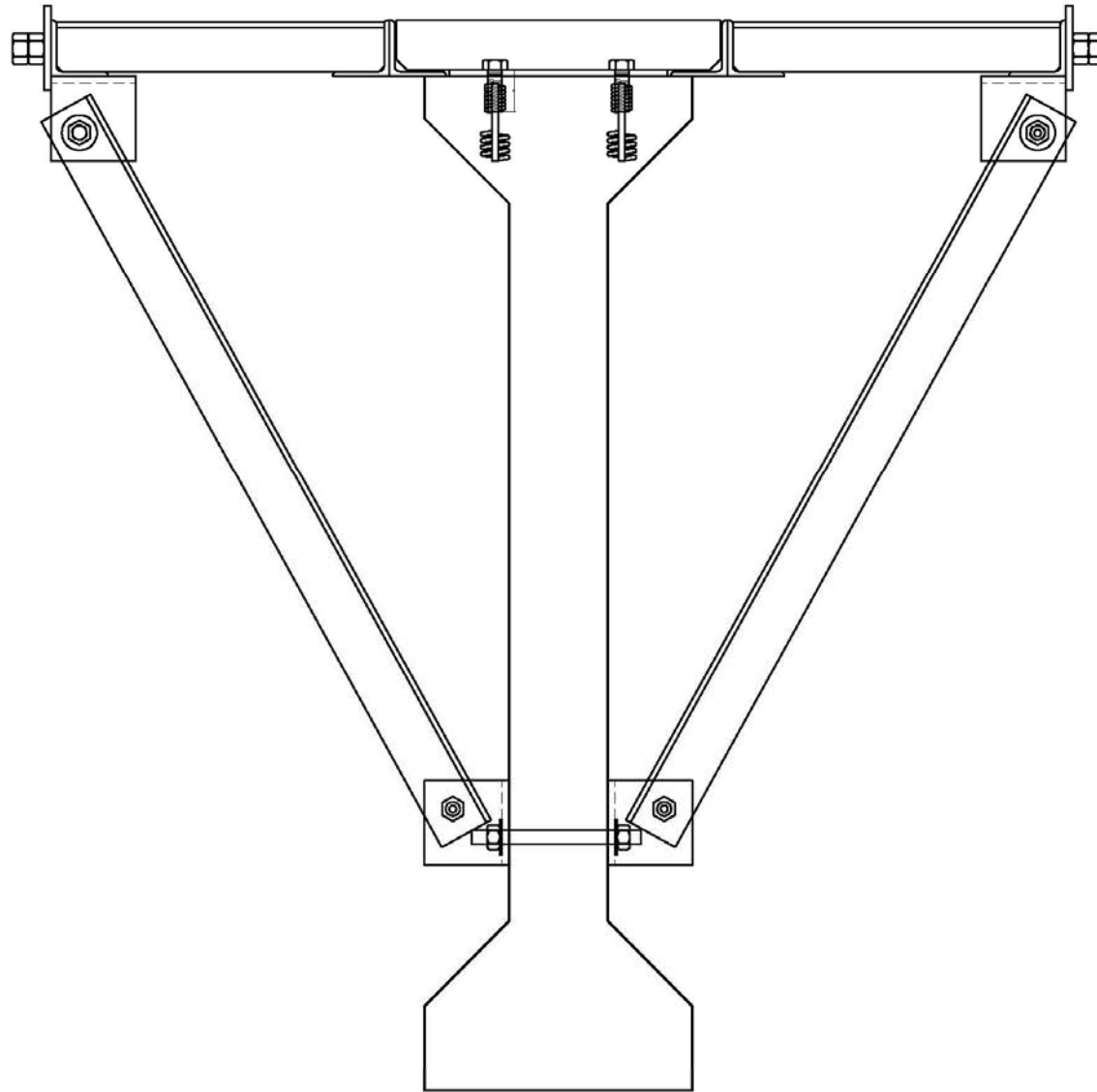


"I" Girder





- Weaker Section at long Lengths
- Need to be stabilized during handling



Added
bracing
for
handling

Plan with bracing

