

pcmac

100 NORTH BRAND BOULEVARD

SUITE 200

GLENDALE, CALIFORNIA 91203

(818) 247-6177

FAX (818) 240-3041

doug@precastconcrete.org

www.precastconcrete.org

PRODUCER MEMBERS:

BETHLEHEM CONSTRUCTORS INC., Shafter, CA

661 / 391-9704 – www.bethlehemconstruction.com

CLARK PACIFIC, West Sacramento, Fontana & Woodland, CA

916 / 371-0305 / 909 / 823-1433 – www.clarkpacific.com

CON-FAB CALIFORNIA CORPORATION, Lathrop & Shafter, CA

209 / 249-4700 – www.confabca.com

CORESLAB STRUCTURES (L.A.) INC., Perris, CA

951 / 943-9119 – www.coreslab.com

HANSON STRUCTURAL PRECAST, A Heidelberg Cement Co., Irwindale,
Pleasant Hill & San Diego, CA - 626 / 8751 – www.hansonstructural.com

KIE-CON INC., Antioch, CA

925 / 754-9494 – www.kiecon.com

MID-STATE PRECAST, L.P., Corcoran, CA

559 / 992-8180 – www.midstateprecast.com

POMEROY, A Division of the US-Concrete Precast Group, Perris, CA

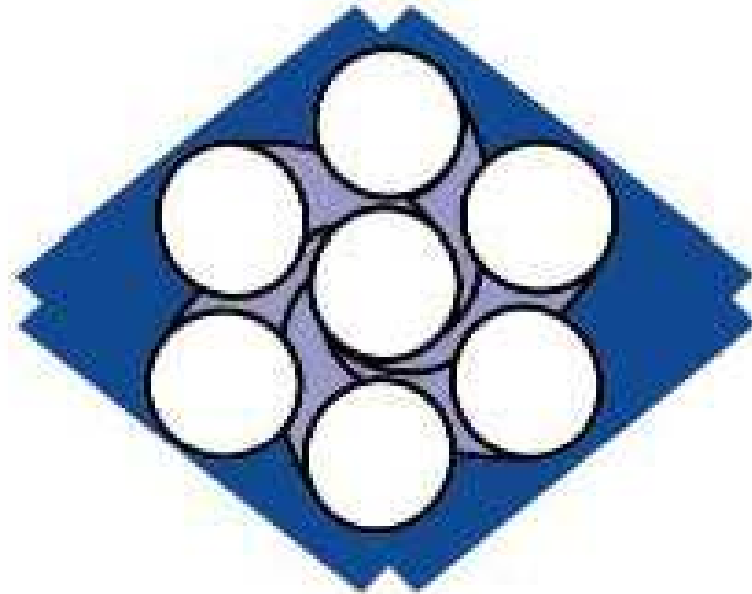
951 / 657-6093 – www.pomeroycorp.com

WALTERS & WOLF PRECAST., Fremont, CA

510 / 226-9800 – www.waltersandwolf.com

WILLIS CONSTRUCTION CO., INC., San Juan Bautista, CA

831 / 623-2900 – www.pre-cast.org



SWPC

EriKSSON

technologies

PCMAC Highlights

pcmac

PRECAST / PRESTRESSED CONCRETE
MANUFACTURERS
ASSOCIATION OF CALIFORNIA

100 NORTH BRAND BOULEVARD
SUITE 200
GLENDALE, CALIFORNIA 91203
(818) 247-6177
FAX (818) 240-3041



EXECUTIVE DIRECTOR
DOUGLAS M. MOORADIAN, A.I.A.



PCI[™]

Precast/Prestressed
Concrete Institute

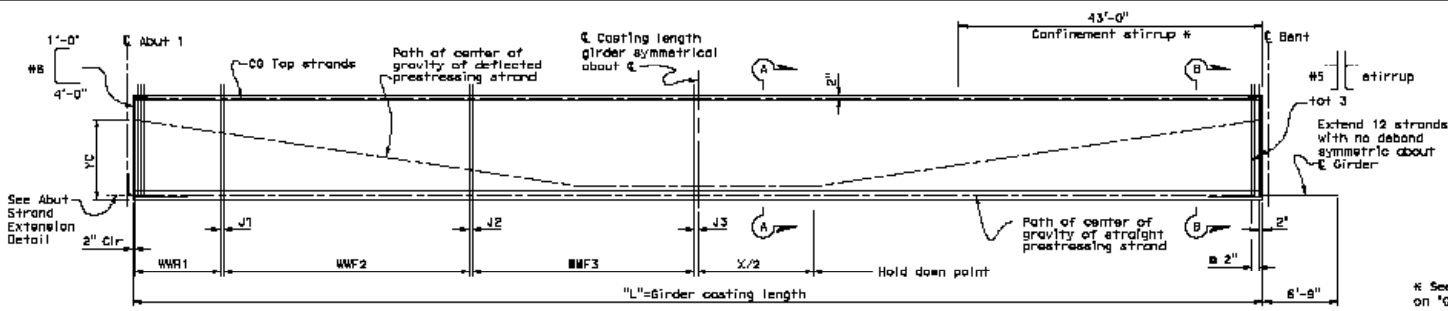
1A



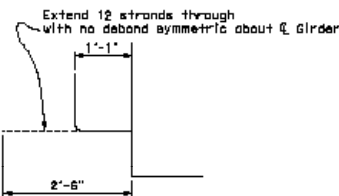
pcmac
A Chapter of the Precast/Prestressed Concrete Institute





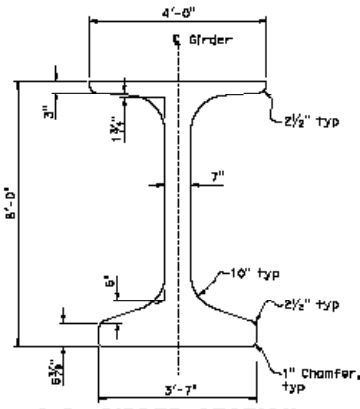


ELEVATION
No Scale

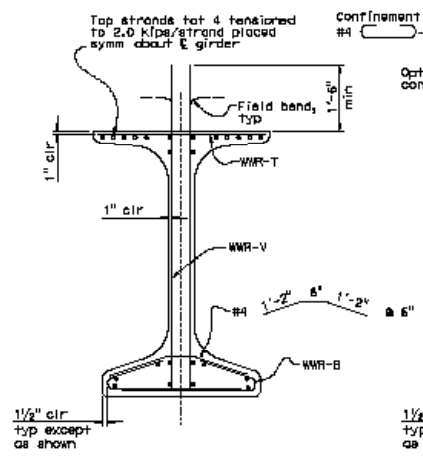


ABUT STRAND EXTENSION DETAIL
No Scale

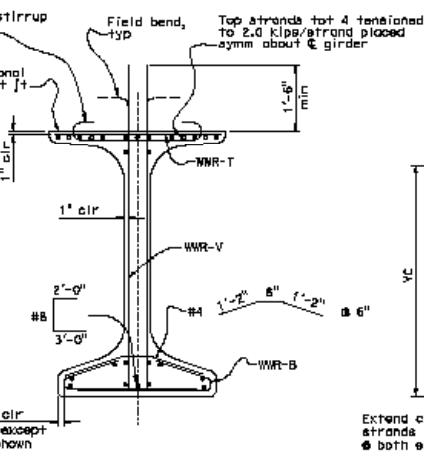
Girder Location	Length	No. of Strands Per Girder	Strands per Row at Midspan							Number of Deflected Strands	Deflected Strand Centroid at Ends YC (in.)	Strand Deflection at Ends YD (in.)	Distance between Holddown Pnts X	Concrete Strength (ksi)		Deflection Component (in.)	
			R1	R2	R3	R4	R5	R6	R7					f'ci	f'c	DL Deck	DL Rail
(A) to (F)	171'-3"	60	20	20	12	2	2	2	2	14	64	50	32'-0"	6	8.5	2.5	0.25



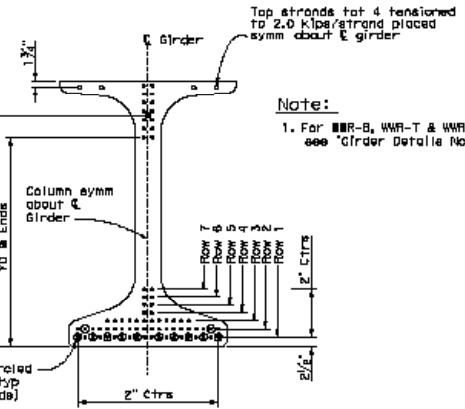
S.G. GIRDER SECTION (DIMENSIONS)
No Scale



SECTION A-A
No Scale



SECTION B-B
No Scale



STRAND LAYOUT
No Scale

Note:
1. For WWR-B, WWR-T & WWR-V see "Girder Details No.2".

DEPT	COUNTY	ROUTE	NET MILES TOTAL PROJECT	SHEET NO.	TOTAL SHEETS
-	-	-	-	-	-

REGISTERED CIVIL ENGINEER DATE _____
 PLANS APPROVAL DATE _____
 The State of California or its officers or agents shall not be responsible for the accuracy or completeness of electronic copies of plans plus sheets.

pcmac 180 North Grand Boulevard, Suite 200
 Glendale, CA 91202

PBS 8215 Sep Park Court Suite 100
 San Diego, CA 92123

* See Threaded Rod Continuity Detail on "Girder Details No.2" sheet.

X
 GENERAL OVERSIGHT
 X
 CHECKED BY DATE
 DESIGN DETAIL SHEET (SCALE) (REV. 01/15/05)

DESIGN BY
 DETAILS BY
 QUANTITIES BY

PREPARED FOR THE
STATE OF CALIFORNIA
 DEPARTMENT OF TRANSPORTATION

Jay Holmbo
 PROJECT ENGINEER
 CU X
 E.A. X

BRIDGE NO. SUPER GIRDER DESIGN EXAMPLE FOR CA BRIDGES
 PROJECT NO. GIRDER DETAILS NO.1

DATE PLOTTED	TIME PLOTTED	DATE PLOTTED	TIME PLOTTED

DATE PLOTTED -> TIME PLOTTED

