



focus

www.PCIMidwest.org

winter 22

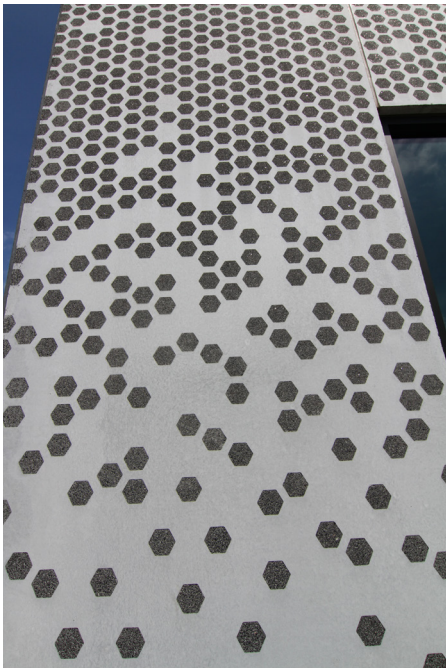
YOU'LL HAVE THE WINNING HAND

WHEN YOU BUILD WITH PRECAST CONCRETE



Mike Johnsrud, Executive Director • info@pcimidwest.org

International Institute of Minnesota



The International Institute of Minnesota project includes the renovation of an existing 21,000 square foot building and the addition of a new wing that measures over 16,000 square feet. The renovation and expansion allowed for more and better-quality classroom space, conference and meeting room spaces, and additional office space to enhance the services and classes the Institute provides.

Wells provided exterior architectural precast concrete insulated wall panels and some precast concrete structural interior wall panels around the elevator and stair shaft. The precast concrete architectural structural panels around the entrance were used to recess the door which also helped to create dimension.

The exterior of the existing building was white painted brick, so the architect's design included white concrete exterior panels that featured a design of intricate detailing with a pattern of black sand and aggregate that was brought to life through micro-etching.

Architect: **JDD Studio**
Engineer: **Meyer, Borgman, Johnson**
Contractor: **Stahl Construction**
Owner: **International Institute of Minnesota**
Precaster: **Wells**
Precast Specialty Engineer: **Wells**
PCI Certified Erector: **Wells**
Location: **St Paul, MN**
Year of Completion: **2022**



www.wellsconcrete.com

H & H Chrysler Dodge Jeep Ram



The new 59,000 square foot H & H Chrysler-Dodge-Jeep-Ram-Fiat building features a 25,000-square-foot showroom, service center, car wash, 4,500-square-foot parts mezzanine and customer lounge with kids play area.

For the project, Coreslab Structures (Omaha) Inc. manufactured 22,600 square feet of insulated precast concrete wall panels with a gray, “ladder” reveal pattern that was obtained by utilizing a formliner. The insulated precast concrete wall panels incorporated 2” of polyisocyanate insulation. Coreslab Structures (Omaha) Inc. also manufactured 13 precast concrete trash enclosures for the facility.

The dealership also boasts one of the area’s first hail net systems. The 135,000-square-foot net protects inventory from hail, heat and UV rays. The nets will help protect a large portion of the inventory and reduce insurance premiums for the dealership.

When an unprecedented flood hit early on in the project, it caused a significant material delay. “Our precast manufacturer was literally underwater,” said Project Manager John Maderak. Darland worked successfully with H & H and Coreslab Structures (Omaha) Inc. to get the product on site as quickly as possible to minimize the delay.

Architect: **Carlson West Povondra Architects**

Engineer: **Infrastructure, LLC**

Contractor: **Darland**

Owner: **H & H Inc.**

Precaster and Precast Specialty Engineer:

Coreslab Structures (Omaha) Inc.

Location: **Papillion, NE**

Year of Completion: **2020**

CORES LAB[®]
STRUCTURES
(OMAHA) INC.

www.coreslab.com

Crosby Hotel Parking



Molin Concrete worked closely with the architect and general contractor to design and build the Crosby Hotel Parking Ramp, a three-level, 124-stall parking ramp. The ramp was built to replace 35 city parking spaces that would be lost due to the planned construction of the adjacent Crosby Hotel project. Of the parking area's three levels, the first two are accessible from Mulberry Street, with the top level being accessible from Second Street.

The hotel and parking ramp are in the historic downtown Stillwater, Minnesota area, so careful consideration was required to insure the newly constructed parking ramp and the hotel would match existing historic buildings. After submitting architectural precast concrete samples, mockup panels and receiving architectural approval to use a tumbled brick in colors replicating a historic aesthetic, Molin Concrete produced and installed the architectural precast wall and spandrel panels.

By designing with precast concrete columns, prestressed concrete long-span beams, and a combination of hollow core plank and solid slab decks, this facility achieves an open



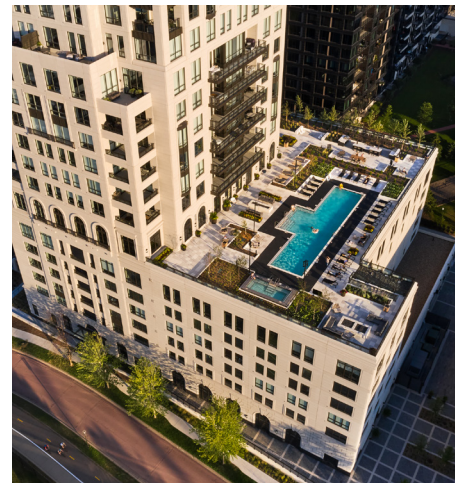
bay that allows traffic to freely maneuver in and out of parking spaces.

In total, Molin Concrete Products Company manufactured and installed 790 square feet of prestressed hollow core plank, 18,250 square feet of prestressed solid slabs, 388 lineal feet of prestressed beams, 483 lineal feet of precast concrete columns, and 13,107 square feet of architectural precast concrete wall panels.

Architect: **HAF Architects**
Engineer: **Larson Engineering, Inc.**
Contractor: **Ironmark Building Company**
Precaster and PCI Certified Erector:
Molin Concrete Products Company
Location: **Stillwater, MN**
Year of Completion: **2018**

MOLIN
Since 1897
CONCRETE PRODUCTS COMPANY
www.molin.com

Eleven



A total of 2,766 methodically constructed precast concrete cladding panels enclose the upscale urban high-rise called “Eleven,” offering the owners of 118 high-end condos picturesque views of the downtown skyline and one of the nation’s premier rivers. On warm summer days, residents of Eleven can be seen floating in the 25-meter pool that encompasses much of the landscaped 8th-floor roof deck, and gazing up the 550-foot tower, blissfully unaware that this 42-story art-deco masterpiece couldn’t have been achieved without precast concrete.

The ornate eight-story podium called for numerous customized forms to construct lefts/rights, corners, double-notches and fanciful cornices. It took the Gage Brothers’ in-house craftspeople more than two weeks

to construct some of the most intricate forms. To ensure maximum consistency, they brought in custom 3D-printed molds for some of the higher-use cornice elements that crown the property’s eighth-floor podium. The contractor noted that the reveals, jointing, overall color and texture consistency of panels showcase the Gage Brothers’ attention to high-quality fabrication and site installation.

Extensive detailing embedded into the off-white sandblast-finished panels continues up to the 16th floor before the upper stories slowly cascade into a thinner design completely clad in precast. Reveals ranging in depth from a half inch to 1½ inches provide numerous lines and shadows at varying times of day. The concrete top

structure provided a minimal base for attachment, yet Gage Brothers created numerous custom forms to successfully achieve the architect’s vision.

Architect: **Robert A.M. Stern Architects, LLP**
Ryan A+E, Inc.

Engineer: **Meyer Borgman Johnson**

Owner: **Arcadia Ryan, LLC**

Contractor: **Ryan Companies US, Inc.**

Precaster: **Gage Brothers**

Precast Specialty Engineer: **Gage Brothers**

PCI Certified Erector: **Amerect Inc.**

Location: **Minneapolis, MN**

Year of Completion: **2022**

Gage
Brothers

www.gagebrothers.com

West Park Elementary School



The highly ornate architectural precast concrete makes West Park Elementary School unique. The finish on this project consisted of a combination of acid etch, exposed aggregate and thin brick. There

were also areas on the interior corridor with integral color dual finished precast concrete. Another notable aesthetic is the 'Grade A' finish that was achieved on the painted interior walls.

A portion of this project included a high wind gymnasium with double tee roof panels. This common practice of incorporating precast concrete storm shelter design into school construction illustrates PCI's slogan that 'precast saves lives'.



Sometimes things don't always go as planned on a project. In this case, precast embed locations were incorrectly placed by the cast-in-place concrete contractor. Even with that challenge, the general contractor noted how well the install process went and complimented Enterprise Precast Concrete's team for overcoming that challenge, specifically noting "There were some clever field modifications to make these work. Everyone was on board, working together as a team to solve any problems."

Architect: **HTK Architects**

Contractor: **JE Dunn Construction**

Precaster (Wall Panels): **Enterprise Precast Concrete**

Precaster (Double Tees): **Prestressed Casting Co**

PCI Certified Installer: **Building Erection Services**

Image Credits: **Jacia Phillips | Arch Photo KC**

Location: **Kansas City, KS**

Year of Completion: **2020**



www.enterpriseprecast.com



www.prestressedcasting.com

Associate Members

Abrasives Inc.

4090 Hwy 49
Glen Ullin, ND 58631
Russell Raad - 701-348 3610

Advanced Concrete Technologies

300 Portsmouth Avenue
Greenland, NH 03840
603-431-5661
www.concretebiz.com
Charles Watkins
cwatkins@concretebiz.com
Josh Hallenbeck
jhallenbeck@concretebiz.com

Afinitas

www.afinitas.com
Jimmy Grant
jimmy.grant@afinitas.com

ALP Supply

300 Ben Fairless Drive
Fairless Hills, PA 19030
www.alpsupply.com
800.332.7090
Mark Ronning – 215-359-7279
mronning@alpsupply.com

American Engineering Testing

550 Cleveland Avenue North
Saint Paul, MN 55114
800-972-6364
www.teamaet.com
Gerard Moulzolf

Architectural Polymers, Inc.

1220 Little Gap Road
Palmerton, PA 18071
610-824-3322
www.apformliner.com
Marshall Walters
marshall@apformliner.com

Ash Grove Cement

1101 Cody Street
Overland Park, KS 66210
Dave Suchorski 913-205-8146
dave.suchorski@ashgrove.com
Steve Wobken 888-334-1401
steve.wobken@ashgrove.com

Athamor Steel

2550 Gray Falls Drive, Suite 216
Houston, TX 77077
www.athamorsteel.com
281-741-1265
Patrick Gregoire – 713-291-7760
pgregoire@athamorsteel.com

Beton-Stahl, Inc.

800 Wilson Ave #206
Menomonie, WI 54751
715-231-2040
www.beton-stahl.com
Corey Leith
info@beton-stahl.com

Bob's Sparkle Wash

1135 114th Lane NW
Coon Rapids, MN 55448
763-225-6500
www.sparklewash.com/centralmn/
Scott Walters – 763-225-6211

Carl Harris Co, Inc

1245 S Santa Fe
Wichita, KS 67211
Carl Harris - 316-267-8700

Cheesebrough Brokerage Inc.

448 Lilac Street
Lino Lakes, MN 55014
Patrick Cheesebrough – 651-717-6060

Commercial Metals Company

1 Steel Mill Drive
Seguin, TX 78155
www.cmc.com
830-372-8284
Jon Kinnischtke - 719-240-0514
jon.kinnischtke@cmc.com
Zach Honeyman - 813-514-5217
zachary.honeyman@cmc.com

CONAC

4475 River Green Pkwy, Suite 100
Duluth, GA 30096
www.conacweb.com
800-336-2598
Farid Sadri – 800-336-2598
fsadri@conacweb.com
Tony Chinn – 770-212-1575
tchinn@conacweb.com

Continental Cement

www.continentalcement.com
Contact: Dave Meyer: 612-889-5236

Cresset Chemical Company

13255 Main Street, Box 367
Weston, OH 43569
800-367-2020
www.cresset.com
Jim Renda - 419-669-2041
jim@cresset.com

Dayton Superior

1125 Byers Road
Miamisburg, OH 45342
www.daytonsuperior.com
Adam Stenberg – 612-364-4158
adamstenberg@daytonsuperior.com

DRL Drafting and Design

1608 Commercial Blvd
Chippewa Falls, WI 54728
715-726-9656 - www.DRLDD.com
Don Loew 715-598-0571
don@drldd.com

e.Construct.USA, LLC

11823 Arbor Street, Suite 200
Omaha, NE 68144
www.econstruct.us
402-884-9998
Bradley Schipper - 402-680-5709
brad.schipper@econstruct.us
Alec Stubbe - 402-314-1893
alec.stubbe@econstruct.us

Egan Company

11611 Business Park Blvd N
Champlin, MN 55316
763-595-4361
https://Intellibatch.eganco.com
Don Weirens - djw3@eganco.com

Elematic Inc

19745 Sommer Drive Suite A
Brookfield, WI 53045
www.elematic.com
262-798-9777
Matt Cherba - 262-798-9777
matt.cherba@elematic-inc.com
Tracy Wallner - 262-798-9777
tracy.wallner@elematic-inc.com

Endicott Thin Brick & Tile LLC

PO Box 645
Fairbury, NE 68352
www.endicott.com
Rep: Dean Schmidt 402-729-3315

Associate Members

Fister Quarries Group / Fister Chemicals and Accessories Group

1150 Lyon Road
Batavia, IL 60510
www.fisterinc.com
www.fisterquarries.com
800-542-7393
800-339-9534
Chris Fister – 630-333-6557
cfister@fisterquarries.com
David Whelan – 630-333-6555
david@fisterquarries.com

Fitzgerald Formliners

1500 E Chestnut Ave
Santa Ana, CA 92701
www.formliners.com
Edward Fitzgerald - 714-547-6710
Becky Stopnik - 714-493-5322
bstopnik@formliners.com

GCC of America

600 S Cherry St. #1000
Glendale, CO 80246
www.gccusa.com
Chuck Cox - ccox@gcc.com
Scott Ruby - sruby@gcc.com

GCP Applied Technologies

Connor Swearinger
www.gcpat.com

Hamilton Form Company

7009 Midway
Fort Worth, TX 76118
www.hamiltonform.com
817-590-2111
sales@hamiltonform.com

Hayden-Murphy Equipment Co, Inc.

9301 E Bloomington Fwy
Minneapolis, MN 55420
www.hayden-murphy.com

Heyer Engineering, Inc.

4180 24th Avenue S
Fargo, ND 58104
701-280-0949
www.heyereengineering.com
Eric Greiff, PE

IconX LLC

13904 Lucille Street
Overland Park Kansas. 66221
913-208-4274
Joel Foderberg
Joel@iconxusa.com
Davis Foderberg
Davis@iconxusa.com

Insteel Wire Products

1373 Boggs Dr
Mt. Airy, NC 27030
www.insteel.com
800-334-9504
Rep: Randy Plitt - rplitt@insteel.com

Iowa Steel & Wire Company

1500 W Van Buren, PO Box 156,
Centerville, IA 52544
www.okbrandwire.com
800-325-5118
Troy Selvy - 641-954-4603
tselvy@okbrand.com

JVI Inc.

7131 N. Ridgeway
Lincolnwood, IL 60712
www.jvi-inc.com
800-742-8127
Todd Adams – 773-251-6344
todd@jvi-inc.com

Kansas City Brick Company

2001 S 45th Street
Kansas City, KS 66106
913-287-7200
www.kcbrick.com
Contact: Evan Schnegelberger

Lehigh Cement

12300 Dupont Avenue South
Burnsville, MN 55337
www.lehighcement.com
Chad Hanson – 952-412-6932

MAPEI Corporation

1144 E Newport Center Dr
Deerfield Beach, FL 33442
888-876-2834
www.mapei.com

Masonry & Precast Specialty Services

726 N Frontier Rd
Papillion, NE 68046
www.masonryprecast.com
402-306-6004
Craig Christensen

Metro Brick Inc.

3314 Winpark Drive
Crystal MN 55427
Office (952) 417-0200
Fax (952) 417-0204
www.metrobrickinc.com

METROBRICK

1201 Millerton Street SE
Canton, OH 44707
www.metrothinbrick.com
Dianne Young - 888-325-3945
dyoung@ironrock.com

Midwest Industrial Supply, Inc.

1101 3rd Street SE
Canton, OH 44707
330-456-3121
www.midwestind.com
Joe Ricca - joe.ricca@midwestind.com

Nox-Crete, Inc.

1444 S 20th Street
Omaha, NE 68108
www.nox-crete.com
402-341-2080
Patrick Linn – 402-578-2970
plinn@nox-crete.com
Stephen Linn – 402-850-9523
slinn@nox-crete.com

nVent LENTON

34600 Solon Road
Solon, OH 44139
800-753-9221
www.erico.com
Manuel Conde - 216-347-6594
manuel.conde@nvent.com
Anirudha Vaidya – 216-401-9051
anirudha.vaidya@nVent.com

Reigstad Engineers, Inc.

192 W 9th St
St Paul, MN 55102
651-292-1123
www.reigstand.com

Sandman Structural Engineers

1587 30th Avenue South
Moorhead, MN 56560
218-227-0022
www.sandmanse.com
Kurt Sandman, PE

Associate Members

Shuttlelift

49 E Yew Street
Sturgeon Bay, WI 54235
www.shuttlelift.com
920-743-8650

Sika Corporation

1515 Titanium Drive
Ottawa, IL 61350
www.usa.sika.com
Andy Pearson - 920-655-7600
pearson.and@us.sika.com

Simem America Inc.

12100 Crown Point, Suite 100
San Antonio, TX 78233
www.simemamerica.com
Jay Newton - 210-568-9987
jay.newton@simemamerica.com
Paul Haley - 603-781-0295
paul.haley@simemamerica.com

SKAKO Concrete, Inc.

7985 Dunbrook Rd, Suite F
San Diego, CA 92126
www.skako.com
John Leszczynski - 852-271-7341

Splice Sleeve North America, Inc.

135 N Old Woodward Ave #222
Birmingham, MI 48009
www.splicesleeve.com
877-880-3230
AJ Ishikawa aishikawa@splicesleeve.com

Standley Batch Systems, Inc.

505 Aquamsi Street
Cape Girardeau, MO 63703
800-325-8084
www.StandleyBatch.com
Jim Mantz - jimm@standleybatch.com

Sumiden Wire Products Corp.

710 Marshall Stuart Drive,
Dickson, TN 37055
www.sumidenwire.com
Matt Speedy - 614-537-5988

Sylvan Products, LLC

7400 SW Cherry Drive
Portland, OR 97223
503-639-9000
www.sylvan-products.com
Bryan White - 971-250-1672
bwhite@sylvan-products.com

UltraSpan Technologies

165 Fennell Street
Winnipeg, MB R3T 0M6
204-992-3200
www.ultraspan.ca

US Formliner

370 Commerce Blvd
Athens, GA 30606
www.usformliner.com
Ronda Gilbert

West Central Steel, Inc.

105 19th Street NW
Willmar, MN 56279
www.wcsteel.com
320-235-4070
Jeff Allinder - 320-214-5228
jallinder@wcsteel.com

Wysan Precast Services LLC

6189 170th Street North
Hawley, MN 56549
218-486-5100
www.wysanprecastservices.com
Paul Nelson - 507-380-9423

If you are a PCI Associate Member and need to update your listing or if your company is interested in becoming a PCI Associate Member, please contact Mike Johnsrud at mike@pcimidwest.org.

NEED CREDITS?



**AIA
Continuing
Education
Provider**

Check out our upcoming webinars • pcimidwest.org



Producer Members

Key:

Architectural
Structural

Bridge – Transportation

	Architectural Precast	Architectural Trim	Beams/Columns	Wall Panels	Poles	Hollow-core Slabs	Single Tees	Double Tees	Stadium Seats	Modular Cells	Soundwalls	Piles	Boxed Beams/Slabs	I Beams/Girders
Advanced Precast Co. (Mike Decker) Dyersville, IA, 563-875-2615 • www.advancedprecastcompany.com	•			•		•		•						
Collins Precast, LLC (Joey Wipf) Iroquois, SD, 605-625-3123 • www.collinsprecast.com	•	•	•	•			•	•	•		•			
Concrete Industries, Inc. (Randy Schultz) Lincoln, NE, 402-434-1800 • www.concreteindustries.com			•	•		•		•	•			•		•
Coreslab Structures (Kansas) Inc. (Dennis Drews) Kansas City, KS, 913-287-5725 • www.coreslab.com											•	•	•	•
Coreslab Structures (Missouri) Inc. (Michael Saint) Marshall, MO, 660-886-3306 • www.coreslab.com	•		•	•			•	•	•				•	•
Coreslab Structures (Omaha) Inc. (Todd Culp) Bellevue, NE, 402-291-0733 • www.coreslab.com	•	•	•	•				•	•	•	•	•	•	•
County Materials Corp. Roberts, WI (Steve Hoelsing, 800-289-2569) • Bonne Terre, MO (Scott Boma, 573-358-2773) • www.countymaterials.com	•	•	•	•		•			•	•	•	•	•	•
Crest Precast Concrete, Inc. (Gary Mader) La Crescent, MN, 507-895-2342 • www.crestprecastconcrete.com	•	•		•							•		•	
Crossland Prefab (Rob Newsom) Columbus, KS, 620-429-1414 • www.crossland.com	•		•	•										
Enterprise Precast Concrete, Inc. Omaha, NE (Martin Lane) 402.895.3848 • Overland Park, KS (Dirk McClure) 913-312-5616 • www.enterpriseprecast.com	•	•		•										
Fabcon Savage, MN 952-890-4444 Columbus, OH, Mahoney City, PA and Pleasanton, KS • www.fabcon-usa.com				•							•	•		
Forterra Building Products (Marcus Orrock) Maple Grove, MN, 763-545-7473 • www.forterrabp.com					•						•	•	•	•
Gage Brothers Concrete Products, Inc. (Joe Bunkers) Sioux Falls, SD, 605-336-1180 • www.gagebrothers.com	•	•	•	•		•		•	•		•			•
Mid America Precast, Inc. (Rod Tanner) Fulton, MO, 573-642-6400 • www.midamericaprecast.com	•	•	•	•	•					•	•			
Molin Concrete Products Co. (Bob Clauson) Lino Lakes, MN, 651-786-7722 • www.molin.com	•		•	•		•			•					
MPC Enterprises, Inc. (Jeff Moehle) Mt. Pleasant, IA, 319-986-2226 • www.mpcnet.com	•	•	•	•	•		•	•	•	•	•			
PDM Precast, Inc. (Adam Petersen) Des Moines, IA, 515-243-5118 • www.pdmprecast.com	•		•	•		•	•	•	•					
Prestressed Casting Co. (David Robertson) Springfield, MO, 417-869-7350 • www.prestressedcasting.com	•		•	•			•	•	•		•			
Prestressed Concrete (Chris Goevert) Newton, KS, 316-283-2277 • www.prestressedconcreteinc.com	•		•	•			•	•	•		•	•	•	•
SteinBauer LLC (Paul Kleinsasser) Faulkton, SD, 605-324-3302 • www.steinbauerprecast.com	•	•	•	•			•	•			•		•	
Stress-Cast Inc (Jim Markle) Assaria, KS, 785-667-3905				•		•								
Taracon Precast (Mark Wipf) Hawley, MN, 507-380-9423 • www.taraconprecast.com	•		•	•		•	•	•	•		•			
Wells (Greg Roth) Wells, MN, Albany, MN and Maple Grove, MN, 800-658-7049 • www.wellsconcrete.com	•	•	•	•		•		•	•		•		•	