



# focus

[www.PCIMidwest.org](http://www.PCIMidwest.org)

fall 22

PRECAST CONCRETE STRUCTURES ARE

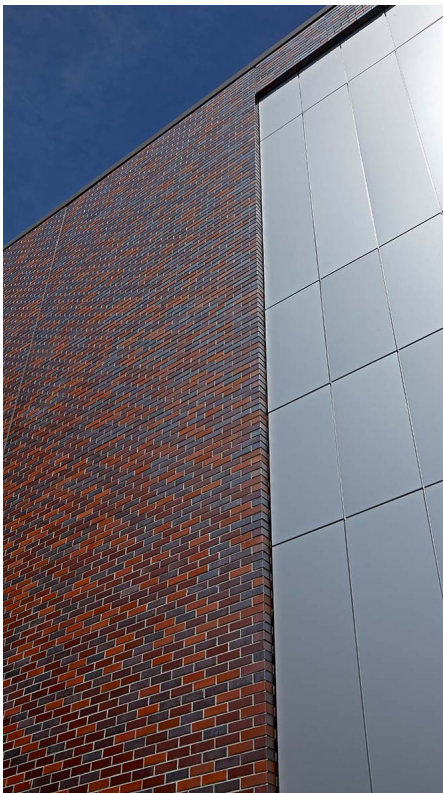
# THE BACKBONE OF MODERN SOCIETY



Mike Johnsrud, Executive Director • [info@pcimidwest.org](mailto:info@pcimidwest.org)



# Boston Scientific



Boston Scientific is not only the largest employer in Maple Grove, MN, it's the largest of its kind in the northwest suburbs of Minneapolis. When the medical device company needed to make a significant addition to an existing building, Wells collaborated with Mortenson and HGA to provide innovative and efficient solutions.

Prefabrication proved to be the quickest and only feasible way to provide a roll cast brick facade on the exterior of the building for this almost 50,000 SF addition. To support the project vision, the Wells team provided architectural solid panels, architectural insulated panels, structural solid panels, and an innovative feature with three sides of brick columns standing approximately 40' tall. To create this monolithic design, the bricks were placed in the form with one side poured, then tilted to pour the other to achieve the wrapped brick effect. The final columns frame expansive vertical windows to bring

light into the building and create a unique pattern in the building's envelope design.

Throughout the project, the team overcame several challenges, including multiple roll cast and sequential pour panels of brick, a tight jobsite with an adjacent hill, and the fact that several panels weighed nearly 80,000 pounds, requiring the team to reach approximately 100 feet to set them. The installation and erection of the prefabricated concrete took just under two months to complete which allowed other trades fast access to the facility.

General Contractor: **Mortenson Construction**  
Architect and Engineer: **HGA**  
Owner: **Boston Scientific**  
Precaster: **Wells**  
Location: **Maple Grove, MN**  
Year of Completion: **2020**

 **WELLS**  
[www.wellsconcrete.com](http://www.wellsconcrete.com)



# University of Nebraska Omaha: Strauss Performing Arts Center Canopy Addition

Renovations and an addition to the Strauss Performing Arts Center at the University of Nebraska Omaha were completed in 2021. Along with the addition of a new canopy, updates to recital hall classrooms, the dedicated piano laboratory and the recording studio will promote the growth of the music school for years to come.

Coreslab Structures (Omaha) worked with HDR to improve the look of the main entrance that was originally built in 1973. In addition to eight new concrete benches that were placed near the main entrance, Coreslab Structures (Omaha) also manufactured a new canopy for the entrance. The cantilevered canopy panels are supported by four aesthetically pleasing columns that were sandblasted to match the building's existing cast-in-place grey concrete exterior finish. Particular consideration was needed structurally because the canopy panels are bearing on the existing building.

Architect and Engineer: **HDR**

Contractor: **Sampson Construction**

Owner: **University of Nebraska**

Precaster: **Coreslab Structures (Omaha) Inc.**

Precast Specialty Engineer:

**Coreslab Structures (Omaha) Inc.**

PCI Certified Erector: **Atlas Steel Erection**

Image Credits: **Matt Corbitt**

Location: **Omaha, NE**

Year of Completion: **2021**



[www.coreslab.com](http://www.coreslab.com)





# Madonna Rehabilitation Hospital – Lincoln Campus Expansion and Renovation



The Madonna Rehabilitation Hospital – Lincoln Campus Expansion and Renovation project includes an approximately 110,000 SF addition. The expansion is made up of three levels with food service, supporting office spaces, a mechanical area, and storage facilities located on the main level. Madonna's new main entrance boasts a modern design with easy access for visitors, patients, and employees.

Patient rooms and support for them occupy Levels 100 and 200. Using feedback from former Madonna patients and current Madonna staff, Davis Design and Sampson

Construction specifically designed this new space with patient safety in mind. Each 371-square-foot patient room has more space for equipment near each bed, seamless transitions between surfaces, and a zero-grade threshold shower.

Hybrid steel and precast construction define the upper floors and roof structures while metal stud framing with composite aluminum panels and brick veneer highlight the building exterior. The need to match existing floor-to-floor heights in certain areas of the building was met through the use of a hybrid construction system.

This system is made up of shallow steel beams and columns that are paired with approximately 98,600 SF of 8" hollowcore planks and complete with a 3" concrete topping. The design of the floor system also compensated for the need to maintain low floor-to-floor heights due to a limited overall building height allowance.

About 6,800 SF of 10" solid precast wall panels serve not only as stair and elevator enclosures, but also as the primary shear walls for the addition. The structural solid precast concrete panels are a structural grey concrete with a standard form finish. They are part of a wall system that includes exterior applied insulation, a furring system, and composite aluminum panels with field-installed face brick.



Architect and Engineer: **Davis Design**

Contractor: **Sampson Construction**

Owner: **Madonna Rehabilitation Hospital**

Precaster: **Concrete Industries, Inc.**

Location: **Lincoln, NE**

Year of Completion: **Summer 2022 (Addition),  
Spring 2023 (Renovation)**



[www.concreteindustries.com](http://www.concreteindustries.com)



# The Lorient



The Lorient is a boutique mixed-use development set in the charming Morningside neighborhood of Edina, MN. This quaint area is nestled just outside Minneapolis and offers a unique feel with parks, historic architecture, and exceptional dining and shopping experiences all within walking distance.

The project includes 45 luxury rental apartments, 6,500 square feet of restaurant and retail space, 77 below-grade resident parking stalls, and 40 at-grade, covered public parking stalls. Patios, rooftop views, and outdoor spaces provide residents with access to nature while still delivering a city living experience. The Lorient is impressive with its modern amenities, premium services, and elegant details.

Taracon Precast manufactured over 60,500 SF of hollowcore, 130 inverted tee beams, and 56 columns for the foundational support, elevator shafts, and multi-level flooring. Designers were able to use precast stepped ledge beams and columns with varying haunch heights for balcony and amenity decks. Precast concrete was selected for this project because of its durability and load-bearing capabilities.



Architect: **ESG**  
Engineer: **Meyer Borgman Johnson**  
Contractor: **Stevens Construction Corp**  
Owner: **Orion**  
Precaster: **Taracon Precast**  
Precast Specialty Engineer:  
**Midwest Structure Engineering Inc.**  
PCI Certified Erector: **Wysan Precast Services**  
Location: **Edina, MN**  
Year of Completion: **2020**



[www.taraconprecast.com](http://www.taraconprecast.com)



# Shakopee Flats



Shakopee Flats is a market-rate apartment and townhome development along the Minnesota River in downtown Shakopee, Minnesota. On the ground floor, the complex also offers retail and restaurant space. This building and its location are a gateway to Shakopee, featuring elegant and durable materials that emphasize the historic nature and revitalization of the site.

County Prestress' Hollowcore was specified for cost savings and installation efficiency. The erector set almost 60,000 SF of hollowcore in three weeks, allowing early access to the site for other trades. Value engineering services from County Prestress helped keep the project within budget.

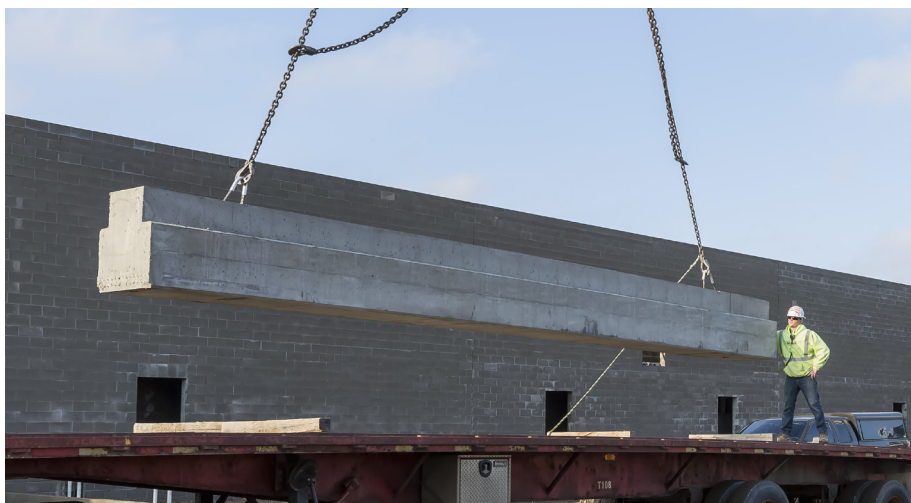
County Prestress manufactured and delivered 28,000 SF of 8-inch depth hollowcore, 32,000 SF of 12-inch depth hollowcore, and 1,666 SF of 12-inch depth solid slabs and coordinated with the contractor and erector to ensure the project was completed on time.

Hollowcore podiums allow column-free spaces for ground floor retail, and offer high fire ratings, noise reduction, and energy efficiency that benefits residents who live in the apartments and townhomes.

Architect: **Momentum Design Group**  
Engineer: **Erickson Roed & Associates**  
Contractor: **Greystone Construction**  
Owner: **City of Shakopee**  
Precaster: **County Prestress, LLC**  
PCI Certified Erector: **Zachman Precast LLC**  
Developer: **Gaughan Companies**  
Location: **Shakopee, MN**  
Year of Completion: **2022**



[www.countymaterials.com](http://www.countymaterials.com)





# Como Park Animal Hospital

Molin Concrete Products designed, manufactured, and installed a total precast concrete structure for the Como Park Animal Hospital in Roseville, Minnesota. The original steel building design was converted into a total precast concrete solution and was erected in four weeks during harsh winter conditions.

The Molin sales and design team provided design assistance to keep the project on schedule and within budget. The final plan included precast/prestressed concrete beams, precast columns, insulated architectural wall panels, and hollow core for the roof and floors. Molin also incorporated 16" hollow core to reduce the number of columns and give the owner a wide-open space for interior design.

The owner liked the rich look of brick and wanted a building that stood out from the surrounding businesses. To meet the desired aesthetics, Molin manufactured architectural wall panels with two distinct colors of cast-in thin brick.

The Molin team worked hard to design the total precast structure to fit the architectural and structural constraints of the project. The results are a perfect display of the flexibility and efficiency of precast concrete. The Como Park Animal Hospital project included over 21,000 square feet of hollow core, 254 lineal feet of prestressed concrete beams, 194 lineal feet of precast concrete columns, and 15,003 square feet of insulated and non-insulated architectural precast wall panels.

Architect: **Lampart Architects, Inc.**

Engineer: **BKBM Engineers, Inc.**

Contractor: **Big-D Construction Corp.**

Owner: **Como Park Animal Hospital**

Precaster: **Molin Concrete Products Co.**

Precast Specialty Engineer:

**Molin Concrete Products Co.**

PCI Certified Erector: **Molin Concrete Products Co.**

Location: **Roseville, MN**

Year of Completion: **2022**





# Associate Members

## **Abrasives Inc.**

4090 Hwy 49  
Glen Ullin, ND 58631  
Russell Raad - 701-348 3610

## **Advanced Concrete Technologies**

300 Portsmouth Avenue  
Greenland, NH 03840  
603-431-5661  
www.concretebiz.com  
Charles Watkins  
cwatkins@concretebiz.com  
Kurt Oakman  
koakman@concretebiz.com

## **Afinitas**

www.afinitas.com  
Jimmy Grant  
jimmy.grant@afinitas.com

## **ALP Supply**

300 Ben Fairless Drive  
Fairless Hills, PA 19030  
www.alpsupply.com  
800.332.7090  
Mark Ronning – 215-359-7279  
mronning@alpsupply.com

## **American Engineering Testing**

550 Cleveland Avenue North  
Saint Paul, MN 55114  
800-972-6364  
www.teamaet.com  
Gerard Moulzolf

## **Architectural Polymers, Inc.**

1220 Little Gap Road  
Palmerton, PA 18071  
610-824-3322  
www.apformliner.com  
Marshall Walters  
marshall@apformliner.com

## **Ash Grove Cement**

1101 Cody Street  
Overland Park, KS 66210  
Dave Suchorski 913-205-8146  
dave.suchorski@ashgrove.com  
Steve Wobken 888-334-1401  
steve.wobken@ashgrove.com

## **Athamor Steel**

2550 Gray Falls Drive, Suite 216  
Houston, TX 77077  
www.athanorsteel.com  
281-741-1265  
Patrick Gregoire – 713-291-7760  
pgregoire@athanorsteel.com

## **Beton-Stahl, Inc.**

800 Wilson Ave #206  
Menomonie, WI 54751  
715-231-2040  
www.beton-stahl.com  
Corey Leith  
info@beton-stahl.com

## **Bob's Sparkle Wash**

1135 114th Lane NW  
Coon Rapids, MN 55448  
763-225-6500  
www.sparklewash.com/centralmn/  
Scott Walters – 763-225-6211

## **CarbonCure Technologies**

42 Myzant Avenue  
Dartmouth, NS B3B12G  
www.carboncure.com  
Contact: Morven Ashton  
902-441-0059 mashton@carboncure.com

## **Carl Harris Co, Inc**

1245 S Santa Fe  
Wichita, KS 67211  
Carl Harris - 316-267-8700

## **Cheesebrough Brokerage Inc.**

448 Lilac Street  
Lino Lakes, MN 55014  
Patrick Cheesebrough – 651-717-6060

## **Commercial Metals Company**

1 Steel Mill Drive  
Seguin, TX 78155  
www.cmc.com  
830-372-8284  
Jon Kinnischtke - 719-240-0514  
jon.kinnischtke@cmc.com  
Zach Honeyman - 813-514-5217  
zachary.honeyman@cmc.com

## **CONAC**

4475 River Green Pkwy, Suite 100  
Duluth, GA 30096  
www.conacweb.com  
800-336-2598  
Farid Sadri – 800-336-2598  
fsadri@conacweb.com  
Tony Chinn – 770-212-1575  
tchinn@conacweb.com

## **Continental Cement**

www.continentalcement.com  
Contact: Dave Meyer: 612-889-5236

## **Cresset Chemical Company**

13255 Main Street, Box 367  
Weston, OH 43569  
800-367-2020  
www.cresset.com  
Jim Renda - 419-669-2041  
jim@cresset.com

## **Dayton Superior**

1125 Byers Road  
Miamisburg, OH 45342  
www.daytonsuperior.com  
Adam Stenberg – 612-364-4158  
adamstenberg@daytonsuperior.com

## **DRL Drafting and Design**

1608 Commercial Blvd  
Chippewa Falls, WI 54728  
715-726-9656 - www.DRLDD.com  
Don Loew 715-598-0571  
don@drldd.com

## **e.Construct.USA, LLC**

11823 Arbor Street, Suite 200  
Omaha, NE 68144  
www.econstruct.us  
402-884-9998  
Bradley Schipper - 402-680-5709  
brad.schipper@econstruct.us  
Alec Stubbe - 402-314-1893  
alec.stubbe@econstruct.us

## **Egan Company**

11611 Business Park Blvd N  
Champlin, MN 55316  
763-595-4361  
https://Intellibatch.eganco.com  
Don Weirens - djw3@eganco.com

## **Elematic Inc**

19745 Sommer Drive Suite A  
Brookfield, WI 53045  
www.elematic.com  
262-798-9777  
Matt Cherba - 262-798-9777  
matt.cherba@elematic-inc.com  
Tracy Wallner - 262-798-9777  
tracy.wallner@elematic-inc.com

## **Endicott Thin Brick & Tile LLC**

PO Box 645  
Fairbury, NE 68352  
www.endicott.com  
Rep: Dean Schmidt 402-729-3315



# Associate Members

## **Fister Quarries Group / Fister Chemicals and Accessories Group**

1150 Lyon Road  
Batavia, IL 60510  
www.fisterinc.com  
www.fisterquarries.com  
800-542-7393  
800-339-9534  
Chris Fister – 630-333-6557  
cfister@fisterquarries.com  
David Whelan – 630-333-6555  
david@fisterquarries.com

## **Fitzgerald Formliners**

1500 E Chestnut Ave  
Santa Ana, CA 92701  
www.formliners.com  
Edward Fitzgerald - 714-547-6710  
Becky Stopnik - 714-493-5322  
bstopnik@formliners.com

## **GCC of America**

600 S Cherry St. #1000  
Glendale, CO 80246  
www.gccusa.com  
Chuck Cox - ccox@gcc.com  
Scott Ruby - sruby@gcc.com

## **GCP Applied Technologies**

Jeff Slaughter  
www.gcpat.com

## **Hamilton Form Company**

7009 Midway  
Fort Worth, TX 76118  
www.hamiltonform.com  
817-590-2111  
sales@hamiltonform.com

## **Hayden-Murphy Equipment Co, Inc.**

9301 E Bloomington Fwy  
Minneapolis, MN 55420  
www.hayden-murphy.com  
Len Kirk - 952-884-2301

## **Heyer Engineering, Inc.**

4180 24th Avenue S  
Fargo, ND 58104  
701-280-0949  
www.heyengineering.com  
Eric Greiff, PE

## **IconX LLC**

13904 Lucille Street  
Overland Park Kansas. 66221  
913-208-4274  
Joel Foderberg  
Joel@iconxusa.com  
Davis Foderberg  
Davis@iconxusa.com

## **Insteel Wire Products**

1373 Boggs Dr  
Mt. Airy, NC 27030  
www.insteel.com  
800-334-9504  
Rep: Randy Plitt - rplitt@insteel.com

## **Iowa Steel & Wire Company**

1500 W Van Buren, PO Box 156,  
Centerville, IA 52544  
www.okbrandwire.com  
800-325-5118  
Troy Selvy - 641-954-4603  
tselvy@okbrand.com

## **JVI Inc.**

7131 N. Ridgeway  
Lincolnwood, IL 60712  
www.jvi-inc.com  
800-742-8127  
Todd Adams – 773-251-6344  
todd@jvi-inc.com

## **Kansas City Brick Company**

2001 S 45th Street  
Kansas City, KS 66106  
913-287-7200  
www.kcbrick.com  
Contact: Evan Schnegelberger

## **Lehigh Cement**

12300 Dupont Avenue South  
Burnsville, MN 55337  
www.lehighcement.com  
Chad Hanson – 952-412-6932

## **MAPEI Corporation**

1144 E Newport Center Dr  
Deerfield Beach, FL 33442  
888-876-2834  
www.mapei.com

## **Masonry & Precast Specialty Services**

726 N Frontier Rd  
Papillion, NE 68046  
www.masonryprecast.com  
402-306-6004  
Craig Christensen

## **Metro Brick Inc.**

3314 Winpark Drive  
Crystal MN 55427  
Office (952) 417-0200  
Fax (952) 417-0204  
www.metrobrickinc.com

## **METROBRICK**

1201 Millerton Street SE  
Canton, OH 44707  
www.metrothinbrick.com  
Dianne Young - 888-325-3945  
dyoung@ironrock.com

## **Midwest Industrial Supply, Inc.**

1101 3rd Street SE  
Canton, OH 44707  
330-456-3121  
www.midwestind.com  
Joe Ricca - joe.ricca@midwestind.com

## **Nox-Crete, Inc.**

1444 S 20th Street  
Omaha, NE 68108  
www.nox-crete.com  
402- 341-2080  
Patrick Linn – 402-578-2970  
plinn@nox-crete.com  
Stephen Linn – 402-850-9523  
slinn@nox-crete.com

## **nVent LENTON**

34600 Solon Road  
Solon, OH 44139  
800-753-9221  
www.erico.com  
Manuel Conde - 216-347-6594  
manuel.conde@nvent.com  
Anirudha Vaidya – 216-401-9051  
anirudha.vaidya@nVent.com

## **Reigstad Engineers, Inc.**

192 W 9th St  
St Paul, MN 55102  
651-292-1123  
www.reigstand.com

## **Sandman Structural Engineers**

1587 30th Avenue South  
Moorhead, MN 56560  
218-227-0022  
www.sandmanse.com  
Kurt Sandman, PE

## **Shuttlelift**

49 E Yew Street  
Sturgeon Bay, WI 54235  
www.shuttlelift.com  
920-743-8650



# Associate Members

## **Sika Corporation**

1515 Titanium Drive  
Ottawa, IL 61350  
[www.usa.sika.com](http://www.usa.sika.com)  
Andy Pearson - 920-655-7600  
[pearson.andy@us.sika.com](mailto:pearson.andy@us.sika.com)

## **Simem America Inc.**

12100 Crown Point, Suite 100  
San Antonio, TX 78233  
[www.simemamerica.com](http://www.simemamerica.com)  
Jay Newton - 210-568-9987  
[jay.newton@simemamerica.com](mailto:jay.newton@simemamerica.com)  
Paul Haley - 603-781-0295  
[paul.haley@simemamerica.com](mailto:paul.haley@simemamerica.com)

## **SKAKO Concrete, Inc.**

7985 Dunbrook Rd, Suite F  
San Diego, CA 92126  
[www.skako.com](http://www.skako.com)  
John Leszczynski - 852-271-7341

## **Splice Sleeve North America, Inc.**

135 N Old Woodward Ave #222  
Birmingham, MI 48009  
[www.splicesleeve.com](http://www.splicesleeve.com)  
877-880-3230  
[AJ.Ishikawa@splicesleeve.com](mailto:AJ.Ishikawa@splicesleeve.com)

## **Standley Batch Systems, Inc.**

505 Aquamsi Street  
Cape Girardeau, MO 63703  
800-325-8084  
[www.StandleyBatch.com](http://www.StandleyBatch.com)  
Jim Mantz - [jimm@standleybatch.com](mailto:jimm@standleybatch.com)

## **Sumiden Wire Products Corp.**

710 Marshall Stuart Drive,  
Dickson, TN 37055  
[www.sumidenwire.com](http://www.sumidenwire.com)  
Matt Speedy - 614-537-5988

## **Sylvan Products, LLC**

7400 SW Cherry Drive  
Portland, OR 97223  
503-639-9000  
[www.sylvan-products.com](http://www.sylvan-products.com)  
Bryan White - 971-250-1672  
[bwhite@sylvan-products.com](mailto:bwhite@sylvan-products.com)

## **UltraSpan Technologies**

165 Fennell Street  
Winnipeg, MB R3T 0M6  
204-992-3200  
[www.ultraspan.ca](http://www.ultraspan.ca)  
Adam Formuziewicz - 204-292-3666  
[adamf@ultraspan.ca](mailto:adamf@ultraspan.ca)

## **US Formliner**

370 Commerce Blvd  
Athens, GA 30606  
[www.usformliner.com](http://www.usformliner.com)  
Ronda Gilbert

## **West Central Steel, Inc.**

105 19th Street NW  
Willmar, MN 56279  
[www.wcsteel.com](http://www.wcsteel.com)  
320-235-4070  
Jeff Allinder - 320-214-5228  
[jallinder@wcsteel.com](mailto:jallinder@wcsteel.com)

## **Wysan Precast Services LLC**

6189 170th Street North  
Hawley, MN 56549  
218-486-5100  
[www.wysanprecastservices.com](http://www.wysanprecastservices.com)  
Paul Nelson - 507-380-9423

If you are a PCI Associate Member and need to update your listing or if your company is interested in becoming a PCI Associate Member, please contact Mike Johnsrud at [mike@pcimidwest.org](mailto:mike@pcimidwest.org).

# NEED CREDITS?



**AIA  
Continuing  
Education  
Provider**

Check out our upcoming webinars • [pcimidwest.org](http://pcimidwest.org)





# Producer Members

## Key:

**Architectural**  
**Structural**

**Bridge – Transportation**

	Architectural Precast	Architectural Trim	Beams/Columns	Wall Panels	Poles	Hollow-core Slabs	Single Tees	Double Tees	Stadium Seats	Modular Cells	Soundwalls	Piles	Boxed Beams/Slabs	I Beams/Girders
<b>Advanced Precast Co.</b> (Mike Decker) Dyersville, IA, 563-875-2615 • <a href="http://www.advancedprecastcompany.com">www.advancedprecastcompany.com</a>	•			•		•		•						
<b>Collins Precast, LLC</b> (Joey Wipf) Iroquois, SD, 605-625-3123 • <a href="http://www.collinsprecast.com">www.collinsprecast.com</a>	•	•	•	•			•	•	•		•			
<b>Concrete Industries, Inc.</b> (Randy Schultz) Lincoln, NE, 402-434-1800 • <a href="http://www.concreteindustries.com">www.concreteindustries.com</a>			•	•		•		•	•			•		•
<b>Coreslab Structures (Kansas) Inc.</b> (Dennis Drews) Kansas City, KS, 913-287-5725 • <a href="http://www.coreslab.com">www.coreslab.com</a>											•	•	•	•
<b>Coreslab Structures (Missouri) Inc.</b> (Michael Saint) Marshall, MO, 660-886-3306 • <a href="http://www.coreslab.com">www.coreslab.com</a>	•		•	•			•	•	•				•	•
<b>Coreslab Structures (Omaha) Inc.</b> (Todd Culp) Bellevue, NE, 402-291-0733 • <a href="http://www.coreslab.com">www.coreslab.com</a>	•	•	•	•				•	•	•	•	•	•	•
<b>County Materials Corp.</b> Roberts, WI (Steve Hoelsing, 800-289-2569) • Bonne Terre, MO (Scott Boma, 573-358-2773) • <a href="http://www.countymaterials.com">www.countymaterials.com</a>	•	•	•	•		•			•	•	•	•	•	•
<b>Crest Precast Concrete, Inc.</b> (Gary Mader) La Crescent, MN, 507-895-2342 • <a href="http://www.crestprecastconcrete.com">www.crestprecastconcrete.com</a>	•	•		•							•		•	
<b>Crossland Prefab</b> (Rob Newsom) Columbus, KS, 620-429-1414 • <a href="http://www.crossland.com">www.crossland.com</a>	•		•	•										
<b>Enterprise Precast Concrete, Inc.</b> Omaha, NE (Martin Lane) 402.895.3848 • Overland Park, KS (Dirk McClure) 913-312-5616 • <a href="http://www.enterpriseprecast.com">www.enterpriseprecast.com</a>	•	•		•										
<b>Fabcon</b> Savage, MN 952-890-4444 Columbus, OH, Mahoney City, PA and Pleasanton, KS • <a href="http://www.fabcon-usa.com">www.fabcon-usa.com</a>				•							•	•		
<b>Forterra Building Products</b> (Joel Mich) Maple Grove, MN, 763-545-7473 • <a href="http://www.forterrabp.com">www.forterrabp.com</a>					•						•	•	•	•
<b>Gage Brothers Concrete Products, Inc.</b> (Joe Bunkers) Sioux Falls, SD, 605-336-1180 • <a href="http://www.gagebrothers.com">www.gagebrothers.com</a>	•	•	•	•		•		•	•		•			•
<b>Mid America Precast, Inc.</b> (Rod Tanner) Fulton, MO, 573-642-6400 • <a href="http://www.midamericaprecast.com">www.midamericaprecast.com</a>	•	•	•	•	•					•	•			
<b>Molin Concrete Products Co.</b> (Bob Clauson) Lino Lakes, MN, 651-786-7722 • <a href="http://www.molin.com">www.molin.com</a>	•		•	•		•			•					
<b>MPC Enterprises, Inc.</b> (Jeff Moehle) Mt. Pleasant, IA, 319-986-2226 • <a href="http://www.mpcnet.com">www.mpcnet.com</a>	•	•	•	•	•		•	•	•	•	•			
<b>PDM Precast, Inc.</b> (Adam Petersen) Des Moines, IA, 515-243-5118 • <a href="http://www.pdmpprecast.com">www.pdmpprecast.com</a>	•		•	•		•	•	•	•					
<b>Prestressed Casting Co.</b> (David Robertson) Springfield, MO, 417-869-7350 • <a href="http://www.prestressedcasting.com">www.prestressedcasting.com</a>	•		•	•			•	•	•		•			
<b>Prestressed Concrete</b> (Chris Goevert) Newton, KS, 316-283-2277 • <a href="http://www.prestressedconcreteinc.com">www.prestressedconcreteinc.com</a>	•		•	•			•	•	•		•	•	•	•
<b>SteinBauer LLC</b> (Paul Kleinsasser) Faulkton, SD, 605-324-3302 • <a href="http://www.steinbauerprecast.com">www.steinbauerprecast.com</a>	•	•	•	•			•	•			•		•	
<b>Stress-Cast Inc</b> (Jim Markle) Assaria, KS, 785-667-3905				•		•								
<b>Taracon Precast</b> (Mark Wipf) Hawley, MN, 507-380-9423 • <a href="http://www.taraconprecast.com">www.taraconprecast.com</a>	•		•	•		•	•	•	•		•			
<b>Wells</b> (Spencer Kubat) Wells, MN, Albany, MN and Maple Grove, MN, 800-658-7049 • <a href="http://www.wellsconcrete.com">www.wellsconcrete.com</a>	•	•	•	•		•		•	•		•		•	