



PRECAST CONCRETE WEATHERS THE STORM

Impact testing of precast concrete insulated sandwich wall panels show that precast concrete provides significantly more protection against flying debris, which often becomes projectiles or missiles during a tornado or hurricane than other building materials, such as wood, steel, brick and vinyl siding. Tests were conducted by the Precast/Prestressed Concrete Institute (PCI) and the Portland Cement Association (PCA) on various wall assemblies with the impact of a 2x4 wood stud traveling at 100 mph, the equivalent of wind-borne debris during a tornado or hurricane with 250 mph winds. Of all materials tested, only the precast concrete design stopped the debris from penetrating the wall, demonstrating the resiliency of precast concrete.

Gotcha Covered



Gotcha Covered is a full-service home design and remodeling center that is comprised of a combined 11,865 square feet of retail showroom, offices, and warehouse storage. About half of the facility's square footage consists of reception, retail showroom and office spaces – including 1,175 square feet of second level open office and breakroom space. Opposite the offices is the 5,930

square foot warehouse and loading dock.

With a business based in the residential design and construction industry, members of the family owned Gotcha Covered were familiar with various structural material options for this project. The owners already had experience with a former tilt-up concrete facility, so the inherent durability of concrete construction influenced their decision to explore plant cast insulated precast-prestressed concrete wall panels.

With consideration given to site limitations and overall desired construction schedule, 10" insulated precast-prestressed concrete wall panels were selected for the building's exterior as well as for the interior separation of the retail and office space from the storage warehouse. Concrete Industries produced approximately 13,750 square feet of 10" insulated precast wall panels utilizing a structural grey concrete with a form finish exterior and smooth trowel interior.

Once erected, the panels received a two-color painted exterior finish with aluminum

cladding and an architectural stone wainscoting for additional detail and texture to the façade. Additionally, the owner elected to leave the interior precast face exposed in all areas, simply painting the surface within the retail showroom and offices.

Designed with durability and sustainability in mind, Gotcha Covered is a structure that will stand the test of time for the next generation. Precast concrete insulated wall panels not only provide long term durability and minimal foreseeable maintenance, but they also produce a building envelope that yields recognizable returns on energy efficiency.

Architect: **Design Associates of Lincoln, Inc.**

Engineer: **Lange Structural Group**

Contractor: **SNB Construction II, Inc.**

Owner: **Gotcha Covered**

Precaster: **Concrete Industries, Inc.**

Location: **Lincoln, NE**

Year of Completion: **2020**



www.concreteindustries.com



SICK, Inc.



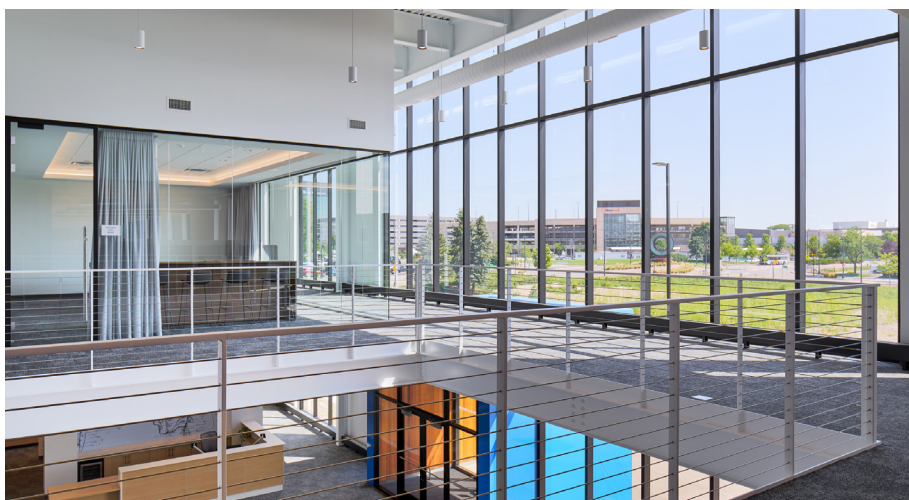
SICK, a global designer and manufacturer of sensors and sensor solutions for industrial applications, sought to expand and consolidate their North American operations into one 550,000 square foot campus in Bloomington, MN, close to their smaller existing headquarters. Due to the size of the updated campus, the \$100 million project will be constructed in four phases over the next 15 years. Once complete, the campus will include office space, production and manufacturing, warehousing, parking ramps, and additional space for projected future

expansion needs. Phase one of the project increased manufacturing space by 40% and consisted of the construction of a new 138,000 square foot office area and facility for sensor production and logistics.

For the exterior of the structure, Wells produced and erected load-bearing architectural precast concrete walls that are nearly 40 feet tall. The charcoal-colored monolithic design utilizes six different patterns with a variety of polished concrete, sandblast, and acid etch finishes, randomly

placed around the building to create visual interest for the long horizontal structure. Complemented by large reaching windows, the multi-patterned finish disguises joints and provides a stunning and unique exterior.

Because of the architectural wall panels' load bearing capabilities, there is no frame required to place behind the walls. This provided SICK a cost-effective solution to their building needs, while keeping the large multi-phase development on schedule. With additional phases yet to come, this project has an exciting future ahead of it, and Wells will continue to provide building solutions to help SICK, Inc. in future development plans.



Architect: **Clow Berg, Inc.**
Engineer: **Meyer | Borgman | Johnson**
Contractor: **Ancoats**
Owner: **SICK, Inc.**
Precaster: **Wells**
Precast Specialty Engineer: **Wells**
PCI Certified Erector: **Wells**
Image Credits: **Clow Berg, Inc.**
Location: **Bloomington, MN**
Year of Completion: **2022**

 **WELLS**
www.wellsconcrete.com

A Fortune 500 Financial Services Organization



Opaque spandrel glass elegantly framed by Silver Shadow stone draws eyes toward this eight-story corporate center, beautifully reflecting the picturesque upper Midwest skies that grace downtown Minneapolis. The \$125 million headquarters for a Fortune 500 financial services organization connects

downtown Minneapolis' emerging eastern core with the growing Elliot Park and East Town neighborhoods.

A two-story pavilion at the base of the main tower welcomes residents and visitors into a spacious lobby, which features a café, a chapel/meditation room, and an art gallery. The public areas tap into the city's downtown skyway system from the second floor, and an all-glass eight-story stair tower encourages connection and ongoing collaboration among more than 1,000 employees.

The architect and contractor considered multiple glass and metal panel options during the design phase but chose precast concrete for its cost-effective value and durability. The Gage Brothers design assistance team connected the architect with various suppliers to find the perfect stone, even arranging a private tour of the stone quarry so the architect could select

the exact color and texture desired.

Gage Brothers provided nearly 23,000 square feet of insulated precast concrete panels for the project, including special L-shaped pieces offering smooth corners without the need for caulking. "Insulated precast panels provided a solid vapor barrier and an all-encompassing building component that eliminated the need for additional sub-contractors while speeding up critical path analyses." - Bill Blanski, Design Principal, HGA

Architect: **HGA**

Engineer: **HGA**

Contractor: **McGough Construction**

Precaster: **Gage Brothers**

PCI Certified Erector: **McGough Construction**

Image Credits: **Corey Gaffer © Gaffer Photography**

Location: **Minneapolis, MN**

Year of Completion: **2020**

Gage
Brothers

www.gagebrothers.com



North Scott Community YMCA



North Scott Community School District and the City of Eldridge, Iowa partnered to create a new fitness center. The center is now home to the North Scott swim team and is a resource for the entire community. Legat Architects designed the facility to include a lobby, gym, and a natatorium complete with a competition pool, family recreational pool,

and kiddie pool. The facility's upper level hosts a weight room, track, and a dance/yoga studio.

Due to its many structural and architectural benefits, precast concrete was chosen for this project. Advanced Precast Company manufactured 20,000 square feet of 12"

insulated architectural precast concrete wall panels that were used on this 43,500-square-foot project. The 86 wall panels were up to 60 feet tall and weighed 70,000 pounds.

The exterior's beautiful aesthetic was created via the use of thin brick and a medium sandblast exterior finish. Utilizing thin brick increased production efficiency while achieving a beautiful architectural finish. The medium sandblast finish was chosen to add texture to enhance the aesthetic appeal of the thin brick.



Architect: **Legat Architect**
Engineer: **McRae Engineering, Inc.**
Contractor: **Russell Construction**
Owner: **North Scott Community School District**
Precaster: **Advanced Precast Company**
Precast Specialty Engineer: **Beton-Stahl**
PCI Certified Erector: **Cedar Valley Steel**
Location: **Eldridge, IA**
Year of Completion: **2022**



www.advanceprecastcompany.com

Midland Garage Door Company



For over 40 years, Midland Garage Door Company has been manufacturing the longest-lasting, smoothest-running residential and commercial overhead garage doors. Along with variety and beauty, their doors are rugged and dependable. Which explains why when a new office and warehouse facility was needed, precast concrete, which is also known for its durability, was the material of choice!

The new facility, which is nearly double the size of the previous building, features an improved layout, expanded inventory capacity, and seven additional CPU service bays.

Coreslab Structures (Omaha) Inc. manufactured 124 insulated precast concrete wall panels for the project. Speed of construction, and the ability to build

quickly during the winter months, were just some of the reasons precast concrete was chosen for the project. The 48,600 square feet of insulated precast concrete wall panels utilized formliners and a buff-colored concrete with a light sandblasted finish.

Architect: **GP Architecture**
Engineer: **Sandman Structural Engineers**
Contractor: **Lund-Ross Constructors**
Owner: **Midland Garage Door Company**
Precaster: **Coreslab Structures (Omaha) Inc.**
Precast Specialty Engineer: **Coreslab Structures (Omaha) Inc.**
PCI Certified Erector: **Atlas Steel Erection**
Location: **Springfield, NE**
Year of Completion: **2023**

CORES LAB
STRUCTURES
(OMAHA) INC.

www.coreslab.com

Associate Members

Abrasives Inc.

4090 Hwy 49
Glen Ullin, ND 58631
Russell Raad - 701-348 3610

Advanced Concrete Technologies

300 Portsmouth Avenue
Greenland, NH 03840
603-431-5661
www.concretebiz.com
Charles Watkins
cwatkins@concretebiz.com
Josh Hallenbeck
jhallenbeck@concretebiz.com

Afinitas

www.afinitas.com
Jimmy Grant
Jimmy.grant@afinitas.com

Alex Brick & Stone

514 22nd Ave W
Alexandria, MN 56308
320-762-0742
http://www.alexbrick.com/
Neil Jensen 320-815-0829

ALP Supply

300 Ben Fairless Drive
Fairless Hills, PA 19030
www.alpsupply.com
800.332.7090
Mark Ronning – 215-359-7279
mronning@alpsupply.com

American Engineering Testing

550 Cleveland Avenue North
Saint Paul, MN 55114
800-972-6364
www.teamaet.com
Gerard Moulzolf

Architectural Polymers, Inc.

1220 Little Gap Road
Palmerton, PA 18071
610-824-3322
www.apformliner.com
Marshall Walters
marshall@apformliner.com

Ash Grove Cement

1101 Cody Street
Overland Park, KS 66210
Dave Suchorski 913-205-8146
dave.suchorski@ashgrove.com
Steve Wobken 888-334-1401
steve.wobken@ashgrove.com

Athamor Steel

2550 Gray Falls Drive, Suite 216
Houston, TX 77077
www.athamorsteel.com
281-741-1265
Patrick Gregoire – 713-291-7760
pgregoire@athamorsteel.com

Beton-Stahl, Inc.

800 Wilson Ave #206
Menomonie, WI 54751
715-231-2040
www.beton-stahl.com
Corey Leith
info@beton-stahl.com

Carl Harris Co, Inc

1245 S Santa Fe
Wichita, KS 67211
Carl Harris - 316-267-8700

CONAC

4475 River Green Pkwy, Suite 100
Duluth, GA 30096
www.conacweb.com
800-336-2598
Farid Sadri – 800-336-2598
fsadri@conacweb.com
Tony Chinn – 770-212-1575
tchinn@conacweb.com

Continental Cement

www.continentalcement.com
Contact: Dave Meyer: 612-889-5236

Cresset Chemical Company

13255 Main Street, Box 367
Weston, OH 43569
800-367-2020
www.cresset.com
Jim Renda - 419-669-2041
jim@cresset.com

Dayton Superior

1125 Byers Road
Miamisburg, OH 45342
www.daytonsuperior.com
Adam Stenberg – 612-364-4158
adamstenberg@daytonsuperior.com

DRL Drafting and Design

1608 Commercial Blvd
Chippewa Falls, WI 54728
715-726-9656 - www.DRLDD.com
Don Loew 715-598-0571
don@dridd.com

e.Construct.USA, LLC

11823 Arbor Street, Suite 200
Omaha, NE 68144
www.econstruct.us
402-884-9998
Bradley Schipper - 402-680-5709
brad.schipper@econstruct.us
Alec Stubbe - 402-314-1893
alec.stubbe@econstruct.us

Egan Company

11611 Business Park Blvd N
Champlin, MN 55316
763-595-4361
https://Intellibatch.eganco.com
Don Weirens - 763-354-8325
djw3@eganco.com

Elematic Inc

19745 Sommer Drive Suite A
Brookfield, WI 53045
www.elematic.com
262-798-9777
Matt Cherba - 262-798-9777
matt.cherba@elematic-inc.com
Tracy Wallner - 262-798-9777
tracy.wallner@elematic-inc.com

Endicott Thin Brick & Tile LLC

PO Box 645
Fairbury, NE 68352
www.endicott.com
Rep: Dean Schmidt 402-729-3315

Federal White Cement

413 E Palmetto Pk Rd #644
Boca Raton, FL 33432
www.federalwhitecement.com
Zack Devecchis – 561-699-1508
zdevecchis@federalwhite.com

Fister Quarries Group / Fister Chemicals and Accessories Group

1150 Lyon Road
Batavia, IL 60510
www.fisterinc.com
www.fisterquarries.com
800-542-7393
800-339-9534
Chris Fister – 630-333-6557
cfister@fisterquarries.com
David Whelan – 630-333-6555
david@fisterquarries.com

Associate Members

GCC of America

600 S Cherry St. #1000
Glendale, CO 80246
www.gccusa.com
Chuck Cox - ccox@gcc.com
Scott Ruby - sruby@gcc.com

GCP Applied Technologies

62 Whittemore Avenue
Cambridge, MA 02140
www.gcpat.com
Dan Drenth – 630-391-8377
daniel.drenth@gcpat.com

Hamilton Form Company

7009 Midway
Fort Worth, TX 76118
www.hamiltonform.com
817-590-2111
sales@hamiltonform.com

Hayden-Murphy Equipment Co, Inc.

9301 E Bloomington Fwy
Minneapolis, MN 55420
www.hayden-murphy.com

Heidelberg Materials

12300 Dupont Avenue South
Burnsville, MN 55337
https://www.heidelbergmaterials.us
Chad Hanson – 952-412-6932

IconX LLC

13904 Lucille Street
Overland Park Kansas. 66221
913-208-4274
Joel Foderberg
Joel@iconxusa.com
Davis Foderberg
Davis@iconxusa.com

Innovative Brick Systems

1745 Panorama Point
Lafayette, CO 80026
www.mbrick.com | 720-890-6032
Sherry Cooney – 303-898-7489
sherry@mbrick.com

Insteel Wire Products

1373 Boggs Dr
Mt. Airy, NC 27030
www.insteel.com
800-334-9504
Rep: Randy Plitt - rplitt@insteel.com

Iowa Steel & Wire Company

1500 W Van Buren, PO Box 156,
Centerville, IA 52544
www.okbrandwire.com
800-325-5118
Troy Selvy - 641-954-4603
tselvy@okbrand.com

JVI Inc.

7131 N. Ridgeway
Lincolnwood, IL 60712
www.jvi-inc.com
800-742-8127
Todd Adams – 773-251-6344
todd@jvi-inc.com

Kansas City Brick Company

2001 S 45th Street
Kansas City, KS 66106
913-287-7200
www.kcbrick.com
Contact: Evan Schnegelberger

Leviat

6467 S Falkenburg Rd
Riverview, FL 33578
www.leviat.com
Nick Fain – 513-507-7223
nick.fain@leviat.us

MAPEI Corporation

1144 E Newport Center Dr
Deerfield Beach, FL 33442
888-876-2834
www.mapei.com

Metro Brick Inc.

3314 Winpark Drive
Crystal MN 55427
Office (952) 417-0200
Fax (952) 417-0204
www.metrobrickinc.com

METROBRICK

1201 Millerton Street SE
Canton, OH 44707
www.metrothinbrick.com
Dianne Young - 888-325-3945
dyoung@ironrock.com

Nawkaw

170 Whitetail Way
Bogart, GA 30622
www.nawkaw.com | 866-462-9529
Jeff Preisner – 785-940-1415
jeff.preisner@nawkaw.com

Nox-Crete, Inc.

1444 S 20th Street
Omaha, NE 68108
www.nox-crete.com
402- 341-2080
Patrick Linn – 402-578-2970
plinn@nox-crete.com
Stephen Linn – 402-850-9523
slinn@nox-crete.com

nVent LENTON

34600 Solon Road
Solon, OH 44139
800-753-9221
www.erico.com
Cristian Garcia - 224-200-0639
cristian.garcia@nvent.com

Sandman Structural Engineers

1587 30th Avenue South
Moorhead, MN 56560
218-227-0022
www.sandmanse.com
Kurt Sandman, PE

Shuttlelift

49 E Yew Street
Sturgeon Bay, WI 54235
www.shuttlelift.com
920-743-8650

Sika Corporation

1515 Titanium Drive
Ottawa, IL 61350
www.usa.sika.com
Andy Pearson - 920-655-7600
pearson.andy@us.sika.com

SKAKO Concrete, Inc.

7985 Dunbrook Rd, Suite F
San Diego, CA 92126
www.skako.com
John Leszczynski - 852-271-7341

Splice Sleeve North America, Inc.

135 N Old Woodward Ave #222
Birmingham, MI 48009
www.splicesleeve.com
877-880-3230
AJ Ishikawa aishikawa@splicesleeve.com

Standley Batch Systems, Inc.

505 Aquamsi Street
Cape Girardeau, MO 63703
800-325-8084
www.StandleyBatch.com
Jim Mantz – jimm@standleybatch.com

Associate Members

Sumiden Wire Products Corp.

710 Marshall Stuart Drive,
Dickson, TN 37055
www.sumidenwire.com
Matt Speedy - 614-537-5988

Summitville Thin Brick

16364 US 644
Summitville, OH 43962
www.summitville.com
Steve Barnhardt – 859-229-7786
sbarnhardt@summitville.com
Jeff Johnson – 330-831-6457
jjohnson@summitville.com

Sylvan Products, LLC

7400 SW Cherry Drive
Portland, OR 97223
503-639-9000
www.sylvan-products.com
Bryan White – 971-250-1672
bwhite@sylvan-products.com

UltraSpan Technologies

165 Fennell Street
Winnipeg, MB R3T 0M6
204-992-3200
www.ultraspan.ca

US Formliner

370 Commerce Blvd
Athens, GA 30606
www.usformliner.com
Ronda Gilbert

West Central Steel, Inc.

105 19th Street NW
Willmar, MN 56279
www.wcsteel.com
320-235-4070
Jeff Allinder - 320-214-5228
jallinder@wcsteel.com

Wire Mesh Corporation

25219 Kuykendahl Road
The Woodlands, TX 77375
www.wmc-us.com | 877-962-9473
Rusty Smith – 904-832-6592
rustys@wmc-us.com

Wysan Precast Services LLC

6189 170th Street North
Hawley, MN 56549
218-486-5100
www.wysanprecastservices.com
Paul Nelson – 507-380-9423

If you are a PCI Associate Member and need to update your listing or if your company is interested in becoming a PCI Associate Member, please contact Mike Johnsrud at mike@pcimidwest.org.

NEED CREDITS?



**AIA
Continuing
Education
Provider**

Check out our upcoming webinars • pcimidwest.org

Producer Members

Key:

Architectural
Structural

Bridge – Transportation

	Architectural Precast	Architectural Trim	Beams/Columns	Wall Panels	Poles	Hollow-core Slabs	Single Tees	Double Tees	Stadium Seats	Modular Cells	Soundwalls	Piles	Boxed Beams/Slabs	I Beams/Girders
Advanced Precast Co. (Mike Decker) Dyersville, IA, 563-875-2615 • www.advancedprecastcompany.com	•			•		•		•						
Collins Precast, LLC (Joey Wipf) Iroquois, SD, 605-625-3123 • www.collinsprecast.com	•	•	•	•			•	•	•		•			
Concrete Industries, Inc. (Randy Schultz) Lincoln, NE, 402-434-1800 • www.concreteindustries.com			•	•		•		•	•			•		•
Coreslab Structures (Kansas) Inc. (Dennis Drews) Kansas City, KS, 913-287-5725 • www.coreslab.com											•	•	•	•
Coreslab Structures (Missouri) Inc. (Michael Saint) Marshall, MO, 660-886-3306 • www.coreslab.com	•		•	•			•	•	•				•	•
Coreslab Structures (Omaha) Inc. (Todd Culp) Bellevue, NE, 402-291-0733 • www.coreslab.com	•	•	•	•				•	•	•	•	•	•	•
County Materials Corp. Roberts, WI (Steve Hoelsing, 800-289-2569) • Bonne Terre, MO (Scott Boma, 573-358-2773) • www.countymaterials.com	•	•	•	•		•			•	•	•	•	•	•
Crest Precast Concrete, Inc. (Gary Mader) La Crescent, MN, 507-895-2342 • www.crestprecastconcrete.com	•	•		•							•		•	
Crossland Prefab (Shay Laurance) Columbus, KS, 620-429-1414 • www.crossland.com	•		•	•										
Enterprise Precast Concrete, Inc. Omaha, NE (Martin Lane) 402.895.3848 • Overland Park, KS (Dirk McClure) 913-312-5616 • www.enterpriseprecast.com	•	•		•										
Fabcon Savage, MN 952-890-4444 Columbus, OH, Mahoney City, PA and Pleasanton, KS • www.fabcon-usa.com				•							•	•		
Forterra Building Products (Marcus Orrock) Maple Grove, MN, 763-545-7473 • www.forterrabp.com					•						•	•	•	•
Gage Brothers Concrete Products, Inc. (Joe Bunkers) Sioux Falls, SD, 605-336-1180 • www.gagebrothers.com	•	•	•	•		•		•	•		•			•
Mid America Precast, Inc. (Rod Tanner) Fulton, MO, 573-642-6400 • www.midamericaprecast.com	•	•	•	•	•					•	•			
Molin Concrete Products Co. (Bob Clauson) Lino Lakes, MN, 651-786-7722 • www.molin.com	•		•	•		•			•					
MPC Enterprises, Inc. (Jeff Moehle) Mt. Pleasant, IA, 319-986-2226 • www.mpcent.com	•	•	•	•	•		•	•	•	•	•			•
PDM Precast, Inc. (Adam Petersen) Des Moines, IA, 515-243-5118 • www.pdmprecast.com	•		•	•		•	•	•	•					
Prestressed Casting Co. (David Robertson) Springfield, MO, 417-869-7350 • www.prestressedcasting.com	•		•	•			•	•	•		•			
Prestressed Concrete (Chris Goevert) Newton, KS, 316-283-2277 • www.prestressedconcreteinc.com	•		•	•			•	•	•		•	•	•	•
SteinBauer LLC (Paul Kleinsasser) Faulkton, SD, 605-324-3302 • www.steinbauerprecast.com	•	•	•	•			•	•			•		•	
Stress-Cast Inc (Jim Markle) Assaria, KS, 785-667-3905				•		•								
Taracon Precast (Mark Wipf) Hawley, MN, 507-380-9423 • www.taraconprecast.com	•		•	•		•	•	•	•		•			
Wells (Greg Roth) Wells, MN, Albany, MN and Maple Grove, MN, 800-658-7049 • www.wellsconcrete.com	•	•	•	•		•		•	•		•		•	