

RIGHT ON THE MONEY

FOR SAMMONS FINANCIAL GROUP CORPORATE HEADQUARTERS

Architect: SVPA Architects

Contractor: The Weitz Company

Structural Engineer: KPFF

Owner's Representative: KDC

Precaster: Enterprise Precast Concrete

PCI Certified Erector: Northwest Steel Erection, Inc.

Brick Manufacturer: Endicott Thin Brick & Tile LLC

Location: West Des Moines, IA



Norman and Evangeline Hagfors Center for Science, Business and Religion



The three-story Hagfors Center for Science, Business, and Religion at Augsburg University provides classroom, laboratory and research facilities for eight departments. Classrooms and labs have the flexibility to reconfigure, enabling an active, experiential learning process for various teaching and learning formats. The casual spaces foster interdisciplinary and collaborative

learning while outdoor spaces create teaching environments and opportunities for community engagement.

Recognizing the uniqueness of the structure, the design team included Wells technical sales and engineers early in the design process. As a result, potential issues were addressed early, enabling more design creativity - especially in regard to size and shape.

To create the building's envelope, Wells manufactured and erected insulated precast concrete wall panels with cast-in Versa-Brix 3D thin brick inlay system from Architectural Polymers. The exterior façade also features Endicott thin brick that provided the visual appeal of traditional masonry with the durability and economy of precast.

The main entrance includes an

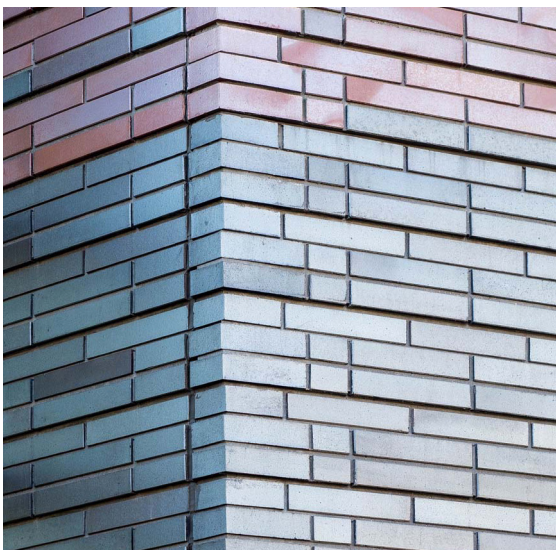
interior precast soffit with the same thin brick and pattern as the exterior. This piece hangs from a structural steel frame above and was installed using special forklifts. Special thin brick shapes were used to create the 130-degree building corner at the main entry. Wells was able to match the mortar joint color, texture and shape of the field-set brick.

The completed Center has become an ideal place for Augsburg University students to pursue degrees in a 21st century urban campus in the heart of Minneapolis.

Architect and Engineer: **HGA**
Contractor: **McGough Construction**
Owner: **Augsburg University**
Precaster: **Wells**
Precast Specialty Engineer: **Wells**
PCI Certified Erector: **Wells**
Image Credits: **HGA**
Location: **Minneapolis, MN**
Year of Completion: **2018**



www.wellsconcrete.com



46 Penn Centre



46 Penn Centre is a 14-story high-rise corporate headquarters. It features eight stories of offices placed above six stories of parking (with an additional two levels of parking below grade). This building is the newest addition to the skyline of the famous Country Club Plaza area in Kansas City. It was strategically located on the outside perimeter so as not to interrupt the smaller scale harmony of the existing buildings

within this historic district.

The exterior is a contemporary design with monumental glass accenting the key design feature of architectural precast concrete. The precast is exposed with a combination of retarder, acid etch and sandblast finishes. It features multiple integral colored mix designs. At the base, granite cladding is cast into the precast, blending perfectly with the

surrounding historical buildings. The two-story main entrance lobby features a glass-curtain wall to take advantage of their great views of the Country Club Plaza.

Enterprise Precast Concrete worked with the architect, contractors and developer from the earliest phases of the design conception. This project was ultimately produced out of two different precast production facilities. Integral color panels were produced in Omaha, NE while the granite faced panels were produced in Corsicana, TX.



Architect: **Hoefler Welker Architects**
Contractor: **McCown Gordon Construction**
Precaster: **Enterprise Precast Concrete**
Structural Engineer of Record:
Bob D Campbell and Associates
Specialty Precast Engineer:
Enterprise Precast Engineering
Photography: **Jacia Phillip | Arch Photo KC**
Location: **Kansas City, MO**
Year of Completion: **2021**



www.enterpriseprecast.com

Eisenhower Bridge of Valor



Since President Eisenhower cut the ribbon to his namesake bridge in Red Wing, Minnesota more than 60 years ago, the steel cantilever structure experienced increasing traffic demands and decades of inclement weather. The Minnesota Department of Transportation inspected the

aging bridge and coordinated its prompt replacement.

In 2017, Zenith Tech planned the Eisenhower Bridge of Valor's reconstruction. The firm relied on County Materials to manufacture and deliver 28 prestress bridge girders, each measuring 175 feet long by 82 inches tall, and weighing 202,000 pounds. At the time of production, these were the largest concrete girders in Wisconsin.

Prestressed concrete bridge girders were used to reconstruct the eastern part of the bridge, which rises above ground until the structure reaches the Mississippi River, where the bridge was completed with three spans of steel girders. The massive prestress concrete girders were set within 45 minutes each using two cranes.

The new Eisenhower Bridge of Valor opened to traffic in November 2019. Over the next few months, the former structure was removed, and crews finalized the new bridge with decorative spires and a multi-use recreation path.



"Based on the span lengths on the Wisconsin side of the project, concrete beams were an economical solution for the superstructure," stated MnDOT Construction Manager, Terry Ward.

Contractor: **Zenith Tech, Inc**
Owner: **MnDOT**
Precaster: **County Materials Corporation**
Photo Credits: **County Materials Corporation**
Location: **Red Wing, MN**
Year of Completion: **2019**

 **COUNTY**
MATERIALS CORPORATION
www.countymaterials.com

Greenhaven Golf Maintenance Facility

During the project design development for the Greenhaven Golf Maintenance Facility the architect and general contractor worked with Molin Concrete Products Company to design an aesthetically pleasing, sustainable and economical building that would support the needs of the City of Anoka golf course.

Precast concrete colors and textures were coordinated by producing samples for the architect and the City of Anoka to review. By producing these samples, the owner and architect were able to better visualize the final appearance of the building.

The structure's architectural precast concrete wall panels incorporate a brown color with multiple finishes to add depth and character. One of the finishes selected was an "Old Timber" form liner that resembles a

wood board that might be found on an old barn. A water wash finish was chosen to add contrast to the simulated wood board portions of the precast concrete panels. Hollow core plank was also incorporated in the project to provide the required loading requirements for the storage areas that are located above the ground level spaces.

Architect: **Oertel Architects**
Engineer: **Paulson & Clark Engineering**
Contractor: **Rochon Corp.**
Precaster: **Molin Concrete Products Company**
PCI Certified Erector: **Molin Concrete Products Company**
Location: **Anoka, MN**
Year of Completion: **2020**



Sora



The SORA project is a post-tensioned parking structure with decorative precast cladding on the west elevation. The decorative wall cladding was incorporated into the plan to achieve a clean and professional finish that would highlight the unique design.

The south stairway that provides access from the parking ramp to the street was constructed with 8" precast concrete wall panels. The exterior walls have an architectural mix and were poured using a form liner to achieve a zebra stripe pattern. Eight-inch cladding pieces on either end of the west elevation match the finish of the stair tower.

The stair tower was erected using a 350T hydro. A majority of the cladding was erected using a tower crane. A small portion of the cladding was erected using a spider crane set up on the top level of the post-tensioned deck where the tower crane couldn't reach.

Working with multiple contractors and timelines on this project was a unique challenge due to the different phases of completion of the surrounding projects.

Architect: **ESG**
Civil Engineer: **Kimley-Horn**
Structural Engineer: **Collaborative Design Group**
Mechanical Engineer: **Steen Engineering**
Contractor: **Reuter Walton Company**
Owner: **Reuter Walton Development**
Contractor: **Ironmark Building Co.**
Precaster: **Taracon Precast**
Precast Specialty Engineer: **Midwest Structure Engineering Inc.**
PCI Certified Erector: **Wysan Precast Services**
Location: **Minneapolis, MN**
Year of Completion: **2020**



www.taraconprecast.com

Associate Members

Abrasives Inc.

4090 Hwy 49
Glen Ullin, ND 58631
Russell Raad - 701-348 3610

Advanced Concrete Technologies

300 Portsmouth Avenue
Greenland, NH 03840
603-431-5661
www.concretebiz.com
Charles Watkins
cwatkins@concretebiz.com
Kurt Oakman
koakman@concretebiz.com

Afinitas

www.afinitas.com
Jimmy Grant
Jimmy.grant@afinitas.com

ALP Supply

300 Ben Fairless Drive
Fairless Hills, PA 19030
www.alpsupply.com
800.332.7090
Mark Ronning – 215-359-7279
mronning@alpsupply.com

American Engineering Testing

550 Cleveland Avenue North
Saint Paul, MN 55114
800-972-6364
www.teamaet.com
Gerard Moulzolf

Architectural Polymers, Inc.,

1220 Little Gap Road
Palmerton, PA 18071
610-824-3322
www.apformliner.com
Marshall Walters
marshall@apformliner.com

Ash Grove Cement

1101 Cody Street
Overland Park, KS 66210
Dave Suchorski 913-205-8146
dave.suchorski@ashgrove.com
Steve Wobken 888-334-1401
steve.wobken@ashgrove.com

Athnor Steel

2550 Gray Falls Drive, Suite 216
Houston, TX 77077
www.athanorsteel.com
281-741-1265
Patrick Gregoire – 713-291-7760
pgregoire@athanorsteel.com

Beton-Stahl, Inc.

800 Wilson Ave #206
Menomonie, WI 54751
715-231-2040
www.beton-stahl.com
Corey Leith
info@beton-stahl.com

Bob's Sparkle Wash

1135 114th Lane NW
Coon Rapids, MN 55448
763-225-6500
www.sparklewash.com/centralmn/
Scott Walters – 763-225-6211

CarbonCure Technologies

42 Myzant Avenue
Dartmouth, NS B3B12G
www.carboncure.com
Contact: Morven Ashton
902-441-0059 mashton@carboncure.com

Carl Harris Co, Inc

1245 S Santa Fe
Wichita, KS 67211
Carl Harris - 316-267-8700

Cheesebrough Brokerage Inc.

448 Lilac Street
Lino Lakes, MN 55014
Patrick Cheesebrough – 651-717-6060

Commercial Metals Company

1 Steel Mill Drive
Seguin, TX 78155
www.cmc.com
830-372-8284
Jon Kinnischtke - 719-240-0514
jon.kinnischtke@cmc.com
Zach Honeyman - 813-514-5217
zachary.honeyman@cmc.com

CONAC

4475 River Green Pkwy, Suite 100
Duluth, GA 30096
www.conacweb.com
800-336-2598
Farid Sadri – 800-336-2598
fsadri@conacweb.com
Tony Chinn – 770-212-1575
tchinn@conacweb.com

Continental Cement

www.continentalcement.com
Contact: Dave Meyer: 612-889-5236

Cresset Chemical Company

13255 Main Street, Box 367
Weston, OH 43569
800-367-2020
www.cresset.com
Jim Renda - 419-669-2041
jim@cresset.com

Dayton Superior

1125 Byers Road
Miamisburg, OH 45342
www.daytonsuperior.com
Adam Stenberg – 612-364-4158
adamstenberg@daytonsuperior.com

DRL Drafting and Design

1608 Commercial Blvd
Chippewa Falls, WI 54728
715-726-9656 - www.DRLDD.com
Don Loew 715-598-0571
don@drldd.com

e.Construct.USA, LLC

11823 Arbor Street, Suite 200
Omaha, NE 68144
www.econstruct.us
402-884-9998
Bradley Schipper - 402-680-5709
brad.schipper@econstruct.us
Alec Stubbe - 402-314-1893
alec.stubbe@econstruct.us

Egan Company

11611 Business Park Blvd N
Champlin, MN 55316
763-595-4361
https://Intellibatch.eganco.com
Don Weirens - djw3@eganco.com
Wayne Bauernschmitt - ww@eganco.com

Elematic Inc

19745 Sommer Drive Suite A
Brookfield, WI 53045
www.elematic.com
262-798-9777
Matt Cherba - 262-798-9777
matt.cherba@elematic-inc.com
Tracy Wallner - 262-798-9777
tracy.wallner@elematic-inc.com

Endicott Thin Brick & Tile LLC

PO Box 645
Fairbury, NE 68352
www.endicott.com
Rep: Dean Schmidt 402-729-3315

Associate Members

Fister Quarries Group / Fister Chemicals and Accessories Group

1150 Lyon Road
Batavia, IL 60510
www.fisterinc.com
www.fisterquarries.com
800-542-7393
800-339-9534
Chris Fister – 630-333-6557
cfister@fisterquarries.com
David Whelan – 630-333-6555
david@fisterquarries.com

Fitzgerald Formliners

1500 E Chestnut Ave
Santa Ana, CA 92701
www.formliners.com
Edward Fitzgerald - 714-547-6710
Becky Stopnik - 714-493-5322
bstopnik@formliners.com

GCC of America

600 S Cherry St. #1000
Glendale, CO 80246
www.gccusa.com
Chuck Cox - ccox@gcc.com
Scott Ruby - sruby@gcc.com

GCP Applied Technologies

Aaron Kjolhede 515-306-1793
aaron.kjolhede@gcpat.com
Tyler DuBord 651-247-8927
tyler.dubord@gcpat.com
www.gcpat.com

Hamilton Form Company

7009 Midway
Fort Worth, TX 76118
www.hamiltonform.com
817-590-2111
sales@hamiltonform.com

Hayden-Murphy Equipment Co, Inc.

9301 E Bloomington Fwy
Minneapolis, MN 55420
www.hayden-murphy.com
Len Kirk - 952-884-2301

Heyer Engineering, Inc.

4180 24th Avenue S
Fargo, ND 58104
701-280-0949
www.heyengineering.com
Eric Greiff, PE

IconX LLC

13904 Lucille Street
Overland Park Kansas. 66221
913-208-4274
Joel Foderberg
Joel@iconxusa.com
Davis Foderberg
Davis@iconxusa.com

Insteel Wire Products

1373 Boggs Dr
Mt. Airy, NC 27030
www.insteel.com
800-334-9504
Rep: Randy Plitt - rplitt@insteel.com

Iowa Steel & Wire Company

1500 W Van Buren, PO Box 156,
Centerville, IA 52544
www.okbrandwire.com
800-325-5118
Troy Selvy - 641-954-4603
tselvy@okbrand.com

JVI Inc.

7131 N. Ridgeway
Lincolnwood, IL 60712
www.jvi-inc.com
800-742-8127
Todd Adams – 773-251-6344
todd@jvi-inc.com

Kansas City Brick Company

2001 S 45th Street
Kansas City, KS 66106
913-287-7200
www.kcbrick.com
Contact: Evan Schnegelberger

Lehigh Cement

12300 Dupont Avenue South
Burnsville, MN 55337
www.lehighcement.com
Chad Hanson – 952-412-6932

MAPEI Corporation

1144 E Newport Center Dr
Deerfield Beach, FL 33442
888-876-2834
www.mapei.com

Masonry & Precast Specialty Services

726 N Frontier Rd
Papillion, NE 68046
www.masonryprecast.com
402-306-6004
Craig Christensen

Metro Brick Inc.

3314 Winpark Drive
Crystal MN 55427
Office (952) 417-0200
Fax (952) 417-0204
www.metrobrickinc.com

METROBRICK

1201 Millerton Street SE
Canton, OH 44707
www.metrothinbrick.com
Dianne Young - 888-325-3945
dyoung@ironrock.com

Midwest Industrial Supply, Inc.

1101 3rd Street SE
Canton, OH 44707
330-456-3121
www.midwestind.com
Joe Ricca - joe.ricca@midwestind.com

Nox-Crete, Inc.

1444 S 20th Street
Omaha, NE 68108
www.nox-crete.com
402- 341-2080
Patrick Linn – 402-578-2970
plinn@nox-crete.com
Stephen Linn – 402-850-9523
slinn@nox-crete.com

nVent LENTON

34600 Solon Road
Solon, OH 44139
800-753-9221
www.erico.com
Manuel Conde - 216-347-6594
manuel.conde@nvent.com
Anirudha Vaidya – 216-401-9051
anirudha.vaidya@nVent.com

Reigstad Engineers, Inc.

192 W 9th St
St Paul, MN 55102
651-292-1123
www.reigstand.com

Sandman Structural Engineers

1587 30th Avenue South
Moorhead, MN 56560
218-227-0022
www.sandmanse.com
Kurt Sandman, PE

Shuttlelift

49 E Yew Street
Sturgeon Bay, WI 54235
www.shuttlelift.com
920-743-8650

Associate Members

Sika Corporation

1515 Titanium Drive
Ottawa, IL 61350
www.usa.sika.com
Andy Pearson - 920-655-7600
pearson.andy@us.sika.com

Simem America Inc.

12100 Crown Point, Suite 100
San Antonio, TX 78233
www.simemamerica.com
Jay Newton - 210-568-9987
jay.newton@simemamerica.com
Paul Haley - 603-781-0295
paul.haley@simemamerica.com

SKAKO Concrete, Inc.

7985 Dunbrook Rd, Suite F
San Diego, CA 92126
www.skako.com
John Leszczynski - 852-271-7341

Splice Sleeve North America, Inc.

38777 W Six Mile Rd #205
Livonia, MI 48152
www.splicesleeve.com
877-880-3230
AJ.Ishikawa@aishikawa@splicesleeve.com

Standley Batch Systems, Inc.

505 Aquamsi Street
Cape Girardeau, MO 63703
800-325-8084
www.StandleyBatch.com
Jim Mantz - jimm@standleybatch.com

Sumiden Wire Products Corp.

710 Marshall Stuart Drive,
Dickson, TN 37055
www.sumidenwire.com
Matt Speedy - 614-537-5988

Sylvan Products, LLC

7400 SW Cherry Drive
Portland, OR 97223
503-639-9000
www.sylvan-products.com
Bryan White - 971-250-1672
bwhite@sylvan-products.com

UltraSpan Technologies

165 Fennell Street
Winnipeg, MB R3T 0M6
204-992-3200
www.ultraspan.ca
Adam Formuziewicz - 204-292-3666
adamf@ultraspan.ca

US Formliner

370 Commerce Blvd
Athens, GA 30606
www.usformliner.com
Ronda Gilbert

West Central Steel, Inc.

105 19th Street NW
Willmar, MN 56279
www.wcsteel.com
320-235-4070
Jeff Allinder - 320-214-5228
jallinder@wcsteel.com

Wysan Precast Services LLC

6189 170th Street North
Hawley, MN 56549
218-486-5100
www.wysanprecastservices.com
Paul Nelson - 507-380-9423

If you are a PCI Associate Member and need to update your listing or if your company is interested in becoming a PCI Associate Member, please contact Mike Johnsrud at mike@pcimidwest.org.

NEED CREDITS?



**AIA
Continuing
Education
Provider**



Check out our upcoming webinars • pcimidwest.org

Producer Members

Key:

Architectural
Structural

Bridge – Transportation

	Architectural Precast	Architectural Trim	Beams/Columns	Wall Panels	Poles	Hollow-core Slabs	Single Tees	Double Tees	Stadium Seats	Modular Cells	Soundwalls	Piles	Boxed Beams/Slabs	I Beams/Girders
Advanced Precast Co. (Mike Decker) Dyersville, IA, 563-875-2615 • www.advancedprecastcompany.com	•			•		•		•						
Collins Precast, LLC (Joey Wipf) Iroquois, SD, 605-625-3123 • www.collinsprecast.com	•	•	•	•			•	•	•		•			
Concrete Industries, Inc. (Randy Schultz) Lincoln, NE, 402-434-1800 • www.concreteindustries.com			•	•		•		•	•			•		•
Coreslab Structures (Kansas) Inc. (Dennis Drews) Kansas City, KS, 913-287-5725 • www.coreslab.com											•	•	•	•
Coreslab Structures (Missouri) Inc. (Michael Saint) Marshall, MO, 660-886-3306 • www.coreslab.com	•		•	•			•	•	•				•	•
Coreslab Structures (Omaha) Inc. (Todd Culp) Bellevue, NE, 402-291-0733 • www.coreslab.com	•	•	•	•				•	•	•	•	•	•	•
County Materials Corp. Roberts, WI (Steve Hoelsing, 800-289-2569) • Bonne Terre, MO (Scott Boma, 573-358-2773) • www.countymaterials.com	•	•	•	•		•			•	•	•	•	•	•
Crest Precast Concrete, Inc. (Gary Mader) La Crescent, MN, 507-895-2342 • www.crestprecastconcrete.com	•	•		•							•		•	
Crossland Prefab (Rob Newsom) Columbus, KS, 620-429-1414 • www.crossland.com	•		•	•										
Enterprise Precast Concrete, Inc. Omaha, NE (Martin Lane) 402.895.3848 • Overland Park, KS (Dirk McClure) 913-312-5616 • www.enterpriseprecast.com	•	•		•										
Fabcon Savage, MN 952-890-4444 Columbus, OH, Mahoney City, PA and Pleasanton, KS • www.fabcon-usa.com				•							•	•		
Forterra Building Products (Joel Mich) Maple Grove, MN, 763-545-7473 • www.forterrabp.com					•						•	•	•	•
Gage Brothers Concrete Products, Inc. (Joe Bunkers) Sioux Falls, SD, 605-336-1180 • www.gagebrothers.com	•	•	•	•		•		•	•		•			•
Mid America Precast, Inc. (Rod Tanner) Fulton, MO, 573-642-6400 • www.midamericaprecast.com	•	•	•	•	•					•	•			
Molin Concrete Products Co. (Bob Clauson) Lino Lakes, MN, 651-786-7722 • www.molin.com	•		•	•		•			•					
MPC Enterprises, Inc. (Jeff Moehle) Mt. Pleasant, IA, 319-986-2226 • www.mpcnet.com	•	•	•	•	•		•	•	•	•	•			
PDM Precast, Inc. (Adam Petersen) Des Moines, IA, 515-243-5118 • www.pdmpprecast.com	•		•	•		•	•	•	•					
Prestressed Casting Co. (David Robertson) Springfield, MO, 417-869-7350 • www.prestressedcasting.com	•		•	•			•	•	•		•			
Prestressed Concrete (Chris Goevert) Newton, KS, 316-283-2277 • www.prestressedconcreteinc.com	•		•	•			•	•	•		•	•	•	•
SteinBauer LLC (Paul Kleinsasser) Faulkton, SD, 605-324-3302 • www.steinbauerprecast.com	•	•	•	•			•	•			•		•	
Stress-Cast Inc (Jim Markle) Assaria, KS, 785-667-3905				•		•								
Taracon Precast (Mark Wipf) Hawley, MN, 507-380-9423 • www.taraconprecast.com	•		•	•		•	•	•	•		•			
Wells (Spencer Kubat) Wells, MN, Albany, MN and Maple Grove, MN, 800-658-7049 • www.wellsconcrete.com	•	•	•	•		•		•	•		•		•	