



focus

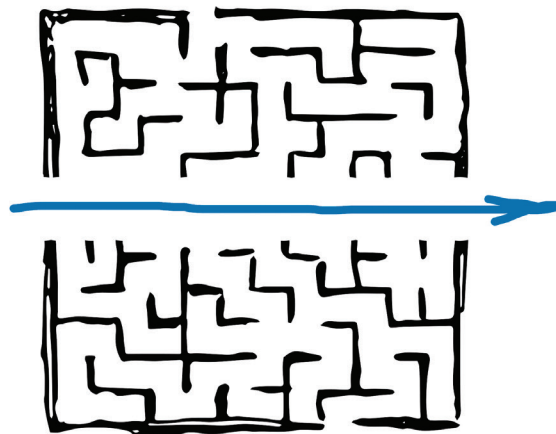
www.PCIMidwest.org

spring 22

DON'T KNOW WHICH WAY TO TURN?

Feel like you're working your way through a maze? Partnering with your local precast concrete producer early in the design process is the best way to harness their extensive knowledge and creativity resulting in the most efficient and economical design possible. Contact a PCI Midwest precast concrete producer member today!

www.pcimidwest.org • info@pcimidwest.org



Mike Johnsrud, Executive Director • info@pcimidwest.org

Legends of Blaine

Construction began in 2018 on the Legends of Blaine - a 192-unit independent senior apartment complex made up of a mix of one-, two-, and three-bedroom units. Additional amenities include a community room, fitness center, theater room, card/craft room, a landscaped outdoor seating area overlooking a pond, and heated underground parking.

Adding to the traditional scope of precast concrete products for multi-family housing projects which includes precast columns, prestressed beams and hollow core plank, Molin also supplied precast concrete foundation walls which added value to this Legends of Blaine senior housing project. Precast concrete foundation walls have become a growing trend in the market for this type of construction. The Legends of Blaine was originally designed with site cast foundation walls, but project team representatives toured an existing construction site that employed the use of precast concrete foundation walls produced by Molin Concrete Products Company. The team was impressed by the quality of the product, and the overall flexibility precast concrete offered. Molin's design-build team also demonstrated how easy it is to convert the site cast system to precast without a major overhaul to the original construction documents.

Ultimately, the project team chose to utilize precast concrete for the foundation walls for the Legends of Blaine. The precast concrete walls were cast with a rock-face block form liner pattern using an architectural



colored mix. Molin contributed 54,887 square feet of hollow core, 1,772 lineal feet of prestressed beams, 645 lineal feet of precast columns, 1,502 square feet of solid slabs, and 31,168 square feet of architectural precast wall panels.

With a variety of available exterior finishes, speed of construction, and flexibility of design, precast concrete foundation walls continue to gain market share over

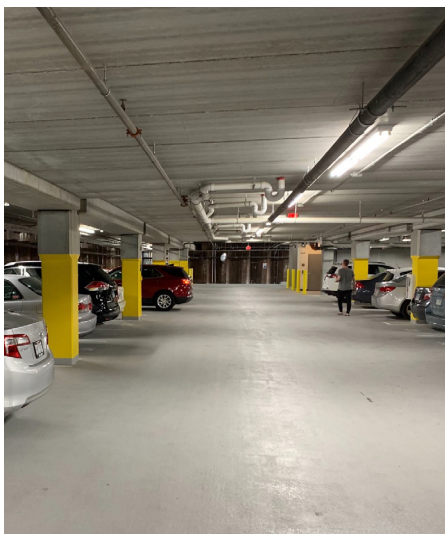
traditional methods such as block, and site cast. An added bonus when using precast concrete in cold climates is that precast concrete does not require supplemental on-site heat to cure because it is produced off-site. In addition, high density impermeable precast concrete foundation walls offer a speed of construction that shortens the overall project construction time.



Architect: **BKV Group**
Engineer: **BKV Group**
Contractor: **CBS Construction Services, Inc.**
Owner: **Dominium**
Precaster: **Molin Concrete Products Company**
PCI Certified Erector: **Molin Concrete Products Company**
Location: **Blaine, MN**
Year of Completion: **2019**

MOLIN
Since 1897
CONCRETE PRODUCTS COMPANY
www.molin.com

Rex26 Parking Garage



Located at the old Rex Hardware site in the Whittier Neighborhood of Minneapolis, Rex26 apartments offers unique, comfortable, and convenient living. This mixed-use development offers apartment living above a 20,000 square foot ALDI along with a below-grade heated parking garage. The 160-stall underground parking garage allows residents and customers easy access in the tight area of Uptown on Lyndale.

Overall construction objectives for the Rex26 heated parking garage were time, labor, and resource savings. Precast concrete's durability, low maintenance characteristics, energy efficiency, and fast erection schedule

made it the perfect choice for this project. Taracon Precast produced precast concrete beams, columns, plank, solid walls, and insulated walls for the parking garage.

Architect: **Legat Architects, Inc.**
Contractor: **Doran Construction Company, LLC**
Precaster: **Taracon Precast**
Precast Specialty Engineer: **Midwest Structure Engineering Inc.**
PCI Certified Erector: **Wysan Precast Services**
Location: **Minneapolis, MN**
Year of Completion: **2019**



www.taraconprecast.com

Sioux Center High School



The new 179,000 square foot, two-story Sioux Center High School was designed with future expansions in mind including a performing arts center and additional classrooms.

Gage Brothers produced a total of 78,405 sf of precast concrete for the project including 267 pieces of corefloor, 33 pieces of smooth grey panels, 10 finished architectural wall panels, and 145 finished architectural insulated wall panels. An Endicott Thin Brick and Tile thin brick was utilized on the main school building, while a brick formliner was used on the lighter panels that surround the gymnasium.

Lee Beukelman, a Sioux Center High School alumnus who also just happened to be the architect on the project, spoke to community members saying "You have done something different and so unique that people around

the state and in the tri-state area are going to want to see what Sioux Center has done. They're going to want to learn about your educational facility, about your curriculum, about your partnerships, about your teachers, your students, your families, your community, your city. It's because of what you have done that you truly put learning on display in Iowa and the surrounding area."

Architect: **CMBA Architects**
Owner: **Sioux Center Community Schools**
Structural Engineer: **Raker Rhodes Engineering**
Civil Engineer: **DGR**
Construction Manager: **Carl A. Nelson & Company**
General Contractor: **Schelling Construction, Inc**
Precaster: **Gage Brothers**
Location: **Sioux Center, IA**
Year of Completion: **2021**

Gage
Brothers
www.gagebrothers.com

Rochester North Police and Service Center



Utilizing over 90,000 square feet of precast concrete, the City of Rochester, Minnesota repurposed a former financial facility into a community cornerstone. The newly renovated building, and 54,000 sq ft addition, are home to both the Rochester Police Department and the Development Services and Infrastructure Center.

This dynamic structure also features operational spaces that were previously unavailable due to limited space. The facility will house expanded office spaces, a crime processing room, temporary holding rooms, vehicle evidence processing bay, and a 48-stall police garage.

Connecting a building renovation and a new addition presented design and aesthetic

challenges for the design team. Fortunately, precast allowed the design team to match an addition's exterior to that of a previously built structure. To create a flawless flow between the renovation and the addition, the beautiful exterior façade was created using a combination of finishes including polish, acid etch, sandblast, and old stone form liner.

Wells produced and erected the complete precast building structure and architectural envelope. This powerful structure utilizes beams, columns, hollowcore and wall panels. To provide a large open area for indoor parking, long span double tees were incorporate. Additionally, utilizing precast allowed the design team to retain earth in the basement level combating a sloping grade.

Wells building solution allowed the City of Rochester to create an economically sound community-oriented facility.

Architect: **BKV Group, Inc.**
Engineer: **BKV Group, Inc.**
Contractor: **Kraus-Anderson Construction Co.**
Owner: **City of Rochester**
Precaster: **Wells**
Precast Specialty Engineer: **Wells**
PCI Certified Erector: **Wells**
Image Credits: **Berg Photography**
Location: **Rochester, MN**
Year of Completion: **2021**



Kellogg Elementary School



Kellogg Elementary School was originally planned as a masonry project but was converted to precast concrete due to the value it added and because it was friendlier to the project's budget. Kerkstra Precast manufactured and erected 187 insulated wall panels (35,332 square feet) and 46 six-inch solid panels (8,053 square feet) on this project. The project features thin brick as well as a wood-grain form liner finish.

Safety, sustainability, and schedule are all large components to the success of building a school. The goal for this project was to build a safe place for students and teachers to learn, grow, and use for many years to come.

Precast concrete can withstand damage from extreme conditions including floods, high winds, debris, ice, blasts, and

vibrations. It can tolerate freeze-thaw cycles better than other materials and won't decay or crumble as it expands and contracts. Because of its fire resistance, it can help increase fire containment times, which ultimately creates safer environments.

Building with precast concrete takes up to 60% less time than conventional framing methods. By utilizing a vertically integrated process, every solution is engineered and modeled in advance, then fabricated to exacting standards.

Architect: **Kingscott**
Engineer: **JDH Structural Engineering**
Contractor: **Miller-Davis Company**
Owner: **Gull Lake Community Schools**
Precaster: **Kerkstra Precast**
PCI Certified Erector: **Kerkstra Precast**
Location: **Hickory Corners, MI**
Year of Completion: **2021**



www.kerkstra.com



Associate Members

Abrasives Inc.

4090 Hwy 49
Glen Ullin, ND 58631
Russell Raad - 701-348 3610

Advanced Concrete Technologies

300 Portsmouth Avenue
Greenland, NH 03840
603-431-5661
www.concretebiz.com
Charles Watkins
cwatkins@concretebiz.com
Kurt Oakman
koakman@concretebiz.com

Afinitas

www.spillmanform.com
Kyle Hignett
kyle.hignett@nhmfc.com
Reed Finch
reed.finch@hpct.com

ALP Supply

300 Ben Fairless Drive
Fairless Hills, PA 19030
www.alpsupply.com
800.332.7090
Mark Ronning - 215-359-7279
mronning@alpsupply.com

Architectural Polymers, Inc.,

1220 Little Gap Road
Palmerton, PA 18071
610-824-3322
www.apformliner.com
Marshall Walters
marshall@apformliner.com

Ash Grove Cement

1101 Cody Street
Overland Park, KS 66210
Dave Suchorski 913-205-8146
dave.suchorski@ashgrove.com
Steve Wobken 888-334-1401
steve.wobken@ashgrove.com

Athanol Steel

2550 Gray Falls Drive, Suite 216
Houston, TX 77077
www.athanorsteel.com
281-741-1265
Patrick Gregoire - 713-291-7760
pgregoire@athanorsteel.com

Beton-Stahl, Inc.

800 Wilson Ave #206
Menomonie, WI 54751
715-231-2040
www.beton-stahl.com
Corey Leith
info@beton-stahl.com

Bob's Sparkle Wash

1135 114th Lane NW
Coon Rapids, MN 55448
763-225-6500
www.sparklewash.com/centralmn/
Scott Walters - 763-225-6211

CarbonCure Technologies

42 Myzant Avenue
Dartmouth, NS B3B12G
www.carboncure.com
Contact: Morven Ashton
902-441-0059 mashton@carboncure.com

Carl Harris Co, Inc

1245 S Santa Fe
Wichita, KS 67211
Carl Harris - 316-267-8700

Cheesebrough Brokerage Inc.

448 Lilac Street
Lino Lakes, MN 55014
Patrick Cheesebrough - 651-717-6060

Commercial Metals Company

1 Steel Mill Drive
Seguin, TX 78155
www.cmc.com
830-372-8284
Jon Kinnischtke - 719-240-0514
jon.kinnischtke@cmc.com
Zach Honeyman - 813-514-5217
zachary.honeyman@cmc.com

CONAC

4475 River Green Pkwy, Suite 100
Duluth, GA 30096
www.conacweb.com
800-336-2598
Farid Sadri - 800-336-2598
fsadri@conacweb.com
Tony Chinn - 770-212-1575
tchinn@conacweb.com

Continental Cement

www.continentalcement.com
Contact: Dave Meyer: 612-889-5236

Cresset Chemical Company

13255 Main Street, Box 367
Weston, OH 43569
800-367-2020
www.cresset.com
Jim Renda - 419-669-2041
jim@cresset.com

Dayton Superior

1125 Byers Road
Miamisburg, OH 45342
www.daytonsuperior.com
Adam Stenberg - 612-364-4158
adamstenberg@daytonsuperior.com

DRL Drafting and Design

1608 Commercial Blvd
Chippewa Falls, WI 54728
715-726-9656 - www.DRLDD.com
Don Loew 715-598-0571
don@drldd.com

e.Construct.USA, LLC

11823 Arbor Street, Suite 200
Omaha, NE 68144
www.econstruct.us
402-884-9998
Bradley Schipper - 402-680-5709
brad.schipper@econstruct.us
Alec Stubbe - 402-314-1893
alec.stubbe@econstruct.us

Egan Company

11611 Business Park Blvd N
Champlin, MN 55316
763-595-4361
https://Intellibatch.eganco.com
Don Weirens - djw3@eganco.com
Wayne Bauernschmitt - ww@eganco.com

Elematic Inc

19745 Sommer Drive Suite A
Brookfield, WI 53045
www.elematic.com
262-798-9777
Matt Cherba - 262-798-9777
matt.cherba@elematic-inc.com
Tracy Wallner - 262-798-9777
tracy.wallner@elematic-inc.com

Endicott Thin Brick & Tile LLC

PO Box 645
Fairbury, NE 68352
www.endicott.com
Rep: Dean Schmidt 402-729-3315

Fister Quarries Group / Fister Chemicals and Accessories Group

1150 Lyon Road
Batavia, IL 60510
www.fisterinc.com
www.fisterquarries.com
800-542-7393
800-339-9534
Chris Fister - 630-333-6557
cfister@fisterquarries.com
David Whelan - 630-333-6555
david@fisterquarries.com

Associate Members

Fitzgerald Formliners

1500 E Chestnut Ave
Santa Ana, CA 92701
www.formliners.com
Edward Fitzgerald - 714-547-6710
Becky Stopnik - 714-493-5322
bstopnik@formliners.com

GCC of America

600 S Cherry St. #1000
Glendale, CO 80246
www.gccusa.com
Chuck Cox - ccox@gcc.com
Scott Ruby - sruby@gcc.com

GCP Applied Technologies

Aaron Kjolhede 515-306-1793
aaron.kjolhede@gcpat.com
Tyler DuBord 651-247-8927
tyler.dubord@gcpat.com
www.gcpat.com

Hamilton Form Company

7009 Midway
Fort Worth, TX 76118
www.hamiltonform.com
817-590-2111
sales@hamiltonform.com

Hayden-Murphy Equipment Co, Inc.

9301 E Bloomington Fwy
Minneapolis, MN 55420
www.hayden-murphy.com
Len Kirk - 952-884-2301

Heyer Engineering, Inc.

4180 24th Avenue S
Fargo, ND 58104
701-280-0949
www.heyengineering.com
Eric Greiff, PE

IconX LLC

13904 Lucille Street
Overland Park Kansas. 66221
913-208-4274
Joel Foderberg
Joel@iconxusa.com
Davis Foderberg
Davis@iconxusa.com

Insteel Wire Products

1373 Boggs Dr
Mt. Airy, NC 27030
www.insteel.com
800-334-9504
Rep: Randy Plitt - rplitt@insteel.com

Iowa Steel & Wire Company

1500 W Van Buren, PO Box 156,
Centerville, IA 52544
www.okbrandwire.com
800-325-5118
Troy Selvy - 641-954-4603
tselvy@okbrand.com

JVI Inc.

7131 N. Ridgeway
Lincolnwood, IL 60712
www.jvi-inc.com
800-742-8127
Todd Adams - 773-251-6344
todd@jvi-inc.com

Kansas City Brick Company

2001 S 45th Street
Kansas City, KS 66106
913-287-7200
www.kcbrick.com
Contact: Evan Schnegelberger

Lehigh Cement

12300 Dupont Avenue South
Burnsville, MN 55337
www.lehighcement.com
Chad Hanson - 952-412-6932

MAPEI Corporation

1144 E Newport Center Dr
Deerfield Beach, FL 33442
888-876-2834
www.mapei.com

Masonry & Precast Specialty Services

726 N Frontier Rd
Papillion, NE 68046
www.masonryprecast.com
402-306-6004
Craig Christensen

Metro Brick Inc.

3314 Winpark Drive
Crystal MN 55427
Office (952) 417-0200
Fax (952) 417-0204
www.metrobrickinc.com

METROBRICK

1201 Millerton Street SE
Canton, OH 44707
www.metrothinbrick.com
Dianne Young - 888-325-3945
dyoung@ironrock.com

Midwest Industrial Supply, Inc.

1101 3rd Street SE
Canton, OH 44707
330-456-3121
www.midwestind.com
Joe Ricca - joe.ricca@midwestind.com

Nox-Crete, Inc.

1444 S 20th Street
Omaha, NE 68108
www.nox-crete.com
402-341-2080
Patrick Linn - 402-578-2970
plinn@nox-crete.com
Stephen Linn - 402-850-9523
slinn@nox-crete.com

nVent LENTON

34600 Solon Road
Solon, OH 44139
800-753-9221
www.erico.com
Manuel Conde - 216-347-6594
manuel.conde@nvent.com
Anirudha Vaidya - 216-401-9051
anirudha.vaidya@nVent.com

Reigstad Engineers, Inc.

192 W 9th St
St Paul, MN 55102
651-292-1123
www.reigstand.com

Sandman Structural Engineers

1587 30th Avenue South
Moorhead, MN 56560
218-227-0022
www.sandmanse.com
Kurt Sandman, PE

Shuttlelift

49 E Yew Street
Sturgeon Bay, WI 54235
www.shuttlelift.com
920-743-8650

Sika Corporation

1515 Titanium Drive
Ottawa, IL 61350
www.usa.sika.com
Andy Pearson - 920-655-7600
pearson.and@us.sika.com

Simem America Inc.

12100 Crown Point, Suite 100
San Antonio, TX 78233
www.simemamerica.com
Jay Newton - 210-568-9987
jay.newton@simemamerica.com
Paul Haley - 603-781-0295
paul.haley@simemamerica.com

Associate Members

SKAKO Concrete, Inc.

7985 Dunbrook Rd, Suite F
San Diego, CA 92126
www.skako.com
John Leszczynski - 852-271-7341

Splice Sleeve North America, Inc.

38777 W Six Mile Rd #205
Livonia, MI 48152
www.splicesleeve.com
877-880-3230
AJ Ishikawa aishikawa@splicesleeve.com

Standley Batch Systems, Inc.

505 Aquamsi Street
Cape Girardeau, MO 63703
800-325-8084
www.StandleyBatch.com
Jim Mantz — jimm@standleybatch.com

Sumiden Wire Products Corp.

710 Marshall Stuart Drive,
Dickson, TN 37055
www.sumidenwire.com
Matt Speedy - 614-537-5988

Sylvan Products, LLC

7400 SW Cherry Drive
Portland, OR 97223
503-639-9000
www.sylvan-products.com
Bryan White — 971-250-1672
bwhite@sylvan-products.com

UltraSpan Technologies

165 Fennell Street
Winnipeg, MB R3T 0M6
204-992-3200
www.ultraspan.ca
Adam Formuziewich - 204-292-3666
adamf@ultraspan.ca

US Formliner

370 Commerce Blvd
Athens, GA 30606
www.usformliner.com
Ronda Gilbert

West Central Steel, Inc.

105 19th Street NW
Willmar, MN 56279
www.wcsteel.com
320-235-4070
Jeff Allinder - 320-214-5228
jallinder@wcsteel.com

Wysan Precast Services LLC

6189 170th Street North
Hawley, MN 56549
218-486-5100
www.wysanprecastservices.com
Paul Nelson — 507-380-9423

If you are a PCI Associate Member and need to update your listing or if your company is interested in becoming an PCI Associate Member, please contact Mike Johnsrud at mike@pcimidwest.org.

NEED CREDITS?



**AIA
Continuing
Education
Provider**

Check out our upcoming webinars • pcimidwest.org



Producer Members

Key:

**Architectural
Structural**

Bridge – Transportation

	Architectural Precast	Architectural Trim	Beams/Columns	Wall Panels	Poles	Hollow-core Slabs	Single Tees	Double Tees	Stadium Seats	Modular Cells	Soundwalls	Piles	Boxed Beams/Slabs	I Beams/Girders
Advanced Precast Co. (Mike Decker) Dyersville, IA, 563-875-2615 • www.advancedprecastcompany.com	•			•		•		•						
Collins Precast, LLC (Joey Wipf) Iroquois, SD, 605-625-3123 • www.collinsprecast.com	•	•	•	•			•	•	•		•			
Concrete Industries, Inc. (Randy Schultz) Lincoln, NE, 402-434-1800 • www.concreteindustries.com			•	•		•		•	•			•		•
Coreslab Structures (Kansas) Inc. (Dennis Drews) Kansas City, KS, 913-287-5725 • www.coreslab.com											•	•	•	•
Coreslab Structures (Missouri) Inc. (Michael Saint) Marshall, MO, 660-886-3306 • www.coreslab.com	•		•	•			•	•	•				•	•
Coreslab Structures (Omaha) Inc. (Todd Culp) Bellevue, NE, 402-291-0733 • www.coreslab.com	•	•	•	•				•	•	•	•	•	•	•
County Materials Corp. Roberts, WI (Steve Hoelsing, 800-289-2569) • Bonne Terre, MO (Scott Boma, 573-358-2773) • www.countymaterials.com	•	•	•	•		•			•	•	•	•	•	•
Crest Precast Concrete, Inc. (Gary Mader) La Crescent, MN, 507-895-2342 • www.crestprecastconcrete.com	•	•		•							•		•	
Crossland Prefab (Rob Newsom) Columbus, KS, 620-429-1414 • www.crossland.com	•		•	•										
Enterprise Precast Concrete, Inc. Omaha, NE (Martin Lane) 402.895.3848 • Overland Park, KS (Dirk McClure) 913-312-5616 • www.enterpriseprecast.com	•	•		•										
Fabcon Savage, MN (Jim Houtman) 952-890-4444 Columbus, OH, Mahoney City, PA and Pleasanton, KS www.fabcon-usa.com				•							•	•		
Forterra Building Products (Joel Mich) Maple Grove, MN, 763-545-7473 • www.forterrabp.com					•						•	•	•	•
Gage Brothers Concrete Products, Inc. (Joe Bunkers) Sioux Falls, SD, 605-336-1180 • www.gagebrothers.com	•	•	•	•		•		•	•		•			•
Mid America Precast, Inc. (Rod Tanner) Fulton, MO, 573-642-6400 • www.midamericaprecast.com	•	•	•	•	•					•	•			
Molin Concrete Products Co. (Bob Clauson) Lino Lakes, MN, 651-786-7722 • www.molin.com	•		•	•		•			•					
MPC Enterprises, Inc. (Jeff Moehle) Mt. Pleasant, IA, 319-986-2226 • www.mpcent.com	•	•	•	•	•		•	•	•	•	•			
PDM Precast, Inc. (Adam Petersen) Des Moines, IA, 515-243-5118 • www.pdmprecast.com	•		•	•		•	•	•	•					
Prestressed Casting Co. (David Robertson) Springfield, MO, 417-869-7350 • www.prestressedcasting.com	•		•	•			•	•	•		•			
Prestressed Concrete (Chris Goevert) Newton, KS, 316-283-2277 • www.prestressedconcreteinc.com	•		•	•			•	•	•		•	•	•	•
SteinBauer LLC (Paul Kleinsasser) Faulkton, SD, 605-324-3302 • www.steinbauerprecast.com	•	•	•	•			•	•			•		•	
Stress-Cast Inc (Jim Markle) Assaria, KS, 785-667-3905				•		•								
Taracon Precast (Mark Wipf) Hawley, MN, 507-380-9423 • www.taraconprecast.com	•		•	•		•	•	•	•		•			
Wells (Spencer Kubat) Wells, MN, Albany, MN and Maple Grove, MN, 800-658-7049 • www.wellsconcrete.com	•	•	•	•		•		•	•		•		•	