



## The Power Of Precast



**Director's Corner...** Change is in the air! The transformation of GSPCA to a new PCI chapter, PCI Gulf South has stirred excitement, as well as interest, in the direction of our precast community. After 12 plus years in the pre-

cast industry, I am constantly reminded about how under-utilized our products are. During recent visits with producers, I heard an all too familiar tune "a lot of people don't know what we do". The time has come to change that! With the combined efforts of producers, PCI, engineers, university professors and myself, we will consistently and tirelessly, work to establish a solid foothold in the construction industry here in the Gulf states.

The merits of precast as a versatile, efficient and durable building material dovetails perfectly with the geography of the gulf coast area. With Katrina still so fresh in people's minds, our product plays perfectly in to the safe and sustainable mentality the gulf coast has adopted since the storm. Unfortunately, not every market of construction has followed suit and we have many challenges ahead to educate those decision makers on the strength of precast products.

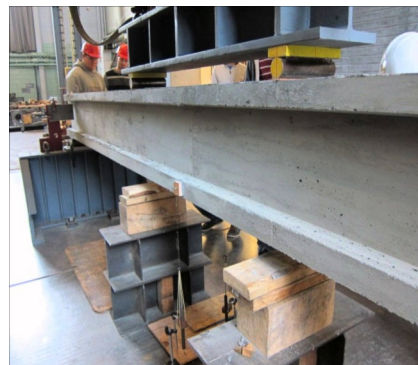
From the establishment of an educational and informative website, to the university classroom, to the "face time" with engineers & architects, PCI Gulf South has embarked on a mission that will ensure the viability and growth of a worthy product for decades to come.

I am hopeful with the help of our readership, we can reach far more people than ever before and explain our role in the construction industry. I encourage everyone with an interest in precast to share and network in any means possible and to please reach out to me at the following email: [pcigulfsouth1@att.net](mailto:pcigulfsouth1@att.net). Together we can make a difference.

*Dan*

## Big Beam Contest

**We would like to congratulate Dr. Sriram Aaleti, PhD and his group of students Vidya Sagar Ronanki, Saeid Hayati, David Burkhalter, Md. Kobir Hossain for placing 7th in the Big Beam competition. This years placement is 2 spots better**



**than last year. Way to go team "Jelly Beam"! We encourage every university and precaster to participate in this worthwhile endeavor. This is a great way to teach the principles of precast/prestressed concrete to future designers.**

**crete to future designers.**



**thompson**  
ENGINEERING

We would like to extend a warm welcome to our two newest Associate members Athanor Steel and Thompson Engineering. Athanor Steel provides PC strand to the precast/prestressed industry as well as the post tension industry. Thompson Engineering provides quality engineering services to the construction industry as well as precast design.

## 2016/2017 Officers:

Congratulations to the new incoming officers of PCI Gulf South. We wish them much success for the upcoming year.



### President

Ben Spruill  
Gulf Coast Pre-Stress  
228-452-9486  
bspruill@gcprestress.com

If you would like to be part of our newsletter emailing list or to schedule a Lunch & Learn please contact :

Dan Eckenrode  
Executive Director  
pcigulfsouth1@att.net  
228-239-3409

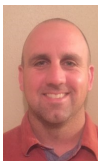


National WW II Museum New Orleans, LA  
Gate Precast Monroeville, AL



### Vice President

Jimmy Stewart  
F-S Prestress  
601-268-2006  
jstewart@fsprestress.com



### Secretary/Treasurer

Jody Singletary  
Dunham Price  
337-433-3900  
jsingletary@dunhamprice.com



### Past President

Johnny Hayes  
Forterra Building Products  
205-633-4681  
johnnie.hayes@forterrabp.com



### Director

Chad Dews  
C.L. Dews & Sons  
601-582-4427  
chad@dewsfoundry.com



### Director

Nathaniel Reynolds  
BASF  
478-951-9985  
nathaniel.reynolds@basf.com

## High Performance Precast

Precast concrete is a high performance material that integrates easily with other systems and provides the versatility, efficiency, and resiliency needed to meet the multi-hazard requirements and long-term demands of high performance structures. With today's demands and forward thinking, these attributes work well with a sustainable design mentality and economic viability the construction community strives for.

VERSATILE	EFFICIENT	RESILIENT
<b>Aesthetic Versatility</b>	<b>Site Efficiency</b>	<b>Structure Durability</b>
Virtually any color, form, and texture	Minimal site disturbance	Long service life
Facade integration	Negligible waste	Barrier wall system
Historic compatibility	Accelerated construction	Functional resilience
<b>Structural Versatility</b>	<b>Energy and Operational Efficiency</b>	<b>Multi-Hazard Protection</b>
Load-bearing envelopes	Scalable performance	Storm resistance
Economical sections	Thermally efficient	Earthquake resistance
Long open spans	Low life-cycle costs	Blast resistance
<b>Use Versatility</b>	<b>Risk Reduction</b>	<b>Life Safety and Health</b>
Recyclable	Design assist	Indoor environmental quality
Deconstructive reuse	Reduced detailing and trades	Passive fire resistance
Adaptive reuse	Enhanced profitability	Meets FEMA 361

## Upcoming Events:

PCI Committee Days, Oct 12-15, 2016  
Chicago, IL

PCI Gulf South Winter Meeting, Dec. 6-8, 2016  
Beau Rivage, Biloxi, MS

PCI Convention, Feb 28-March 4, 2017  
Cleveland, OH

## DID YOU KNOW?

Concrete is used more than any other man-made material on the planet. About 6 billion cubic meters of concrete are made each year, which equals one cubic meter for every person on Earth. (www.quora.com)

