

SHOULD BE 6" AS PER SDM 6.3.1.2

Should also revise SDM 6.3.1.2 which only refers to 2 top strand locations

● = MANDATORY STRAND LOCATIONS (8)

WHEN STRANDS ARE ADDED AT MANDATORY STRAND LOCATIONS, THEY SHALL BE PULLED TO A LOAD OF 4500 LBS (20 kN).

PCEF

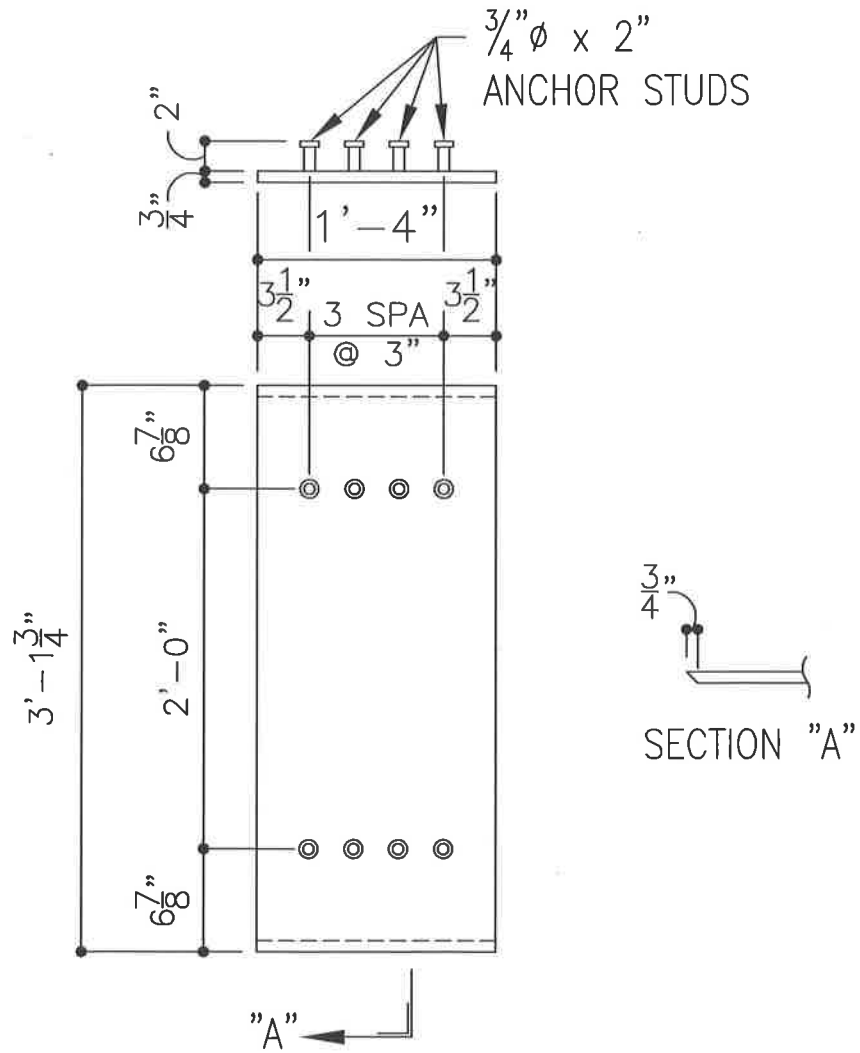
Georgia/Carolinas Prestressed Concrete
Economical Fabrication Committee

SHEET DETAILS:

FIB STRAND TEMPLATE

DRAWN BY: -

CHECKED BY: -



PCEF

Georgia/Carolinas Prestressed Concrete
 Economical Fabrication Committee

SHEET DETAILS:

EMBEDDED PLATE B-1 DETAILS

DRAWN BY: —

CHECKED BY: —