

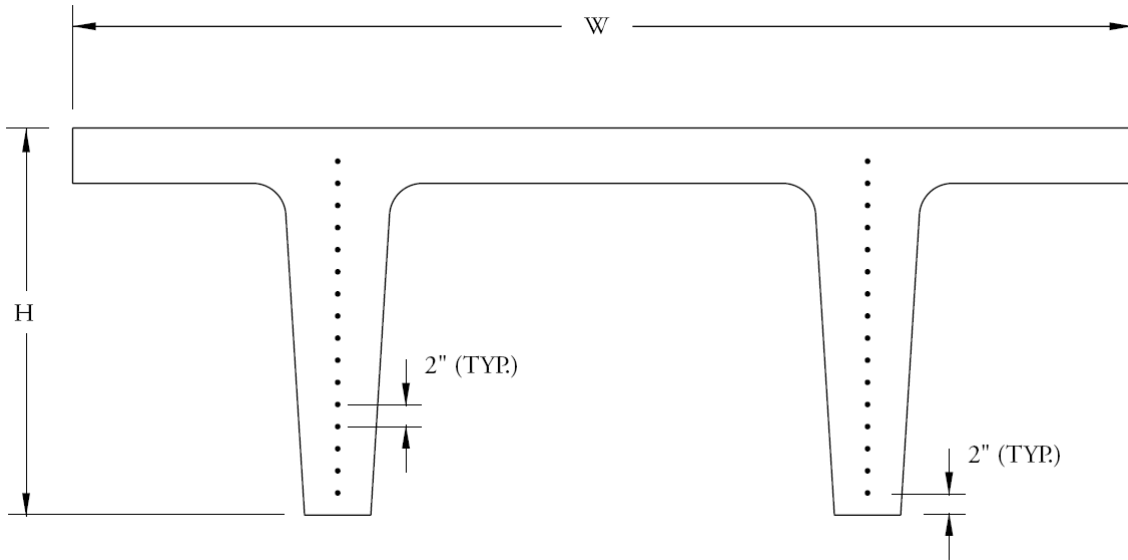
Light Sections

W ft	H in.	T in.	A in.	C in.	E in.	Area in. ²	Inertia in. ⁴	y _{bottom} in.	Weight kip/ft
5	27	5	4.5	8	36	575	33,740	18.6	0.599
6	23	5	4.5	6.5	36	558	21,366	16.61	0.582
6	27	5	4.5	8	36	635	35,758	19.15	0.662
8	27	5	3.75	5.75	48	689	32,888	20.64	0.718
8	35	5	3.75	6.5	48	787	72,421	26.2	0.82

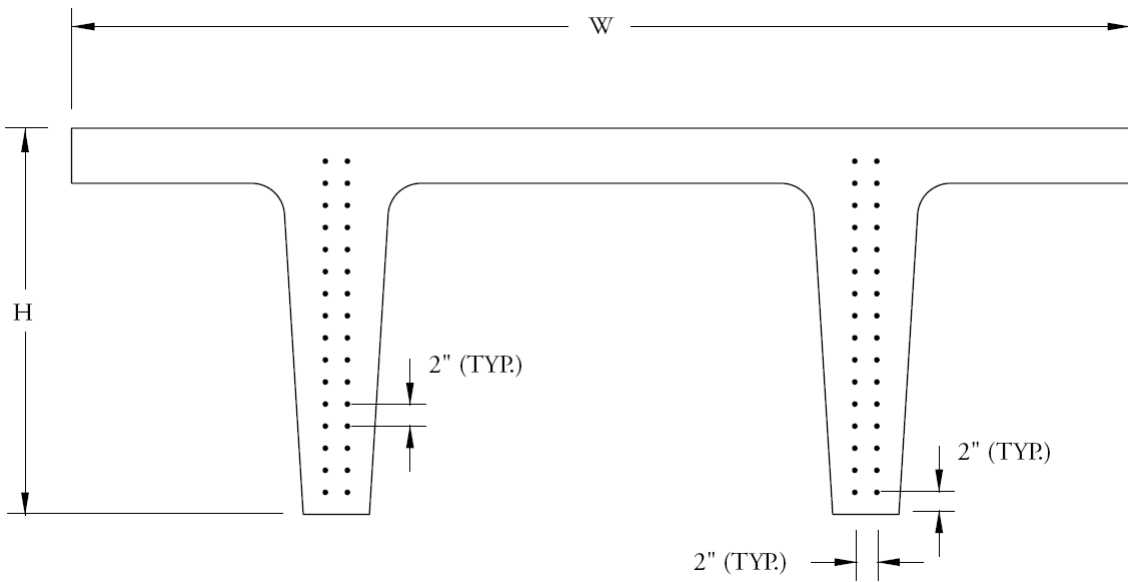
Heavy Sections

W ft	H in.	T in.	A in.	C in.	E in.	Area in. ²	Inertia in. ⁴	y _{bottom} in.	Weight kip/ft
5	36	6	6	8	30	780	90,286	23.69	0.812
6	35	5	6	9.75	48	840	90,164	23.3	0.876
7	35	5	6	9.75	48	900	95,028	23.91	0.938
8	35	5	6	9.75	48	960	99,299	24.45	1.001
6	27	5	7	9.75	48	731	45,084	18.09	0.761
7	27	5	7	9.75	48	791	47,486	18.58	0.824
8	27	5	7	9.75	48	851	49,566	19	0.886
6	21	5	7.75	9.75	48	644	22,720	14.11	0.671
7	21	5	7.75	9.75	48	704	23,903	14.48	0.733
8	21	5	7.75	9.75	48	764	24,920	14.8	0.796

Double Tee Beams



Light Sections



Heavy Sections