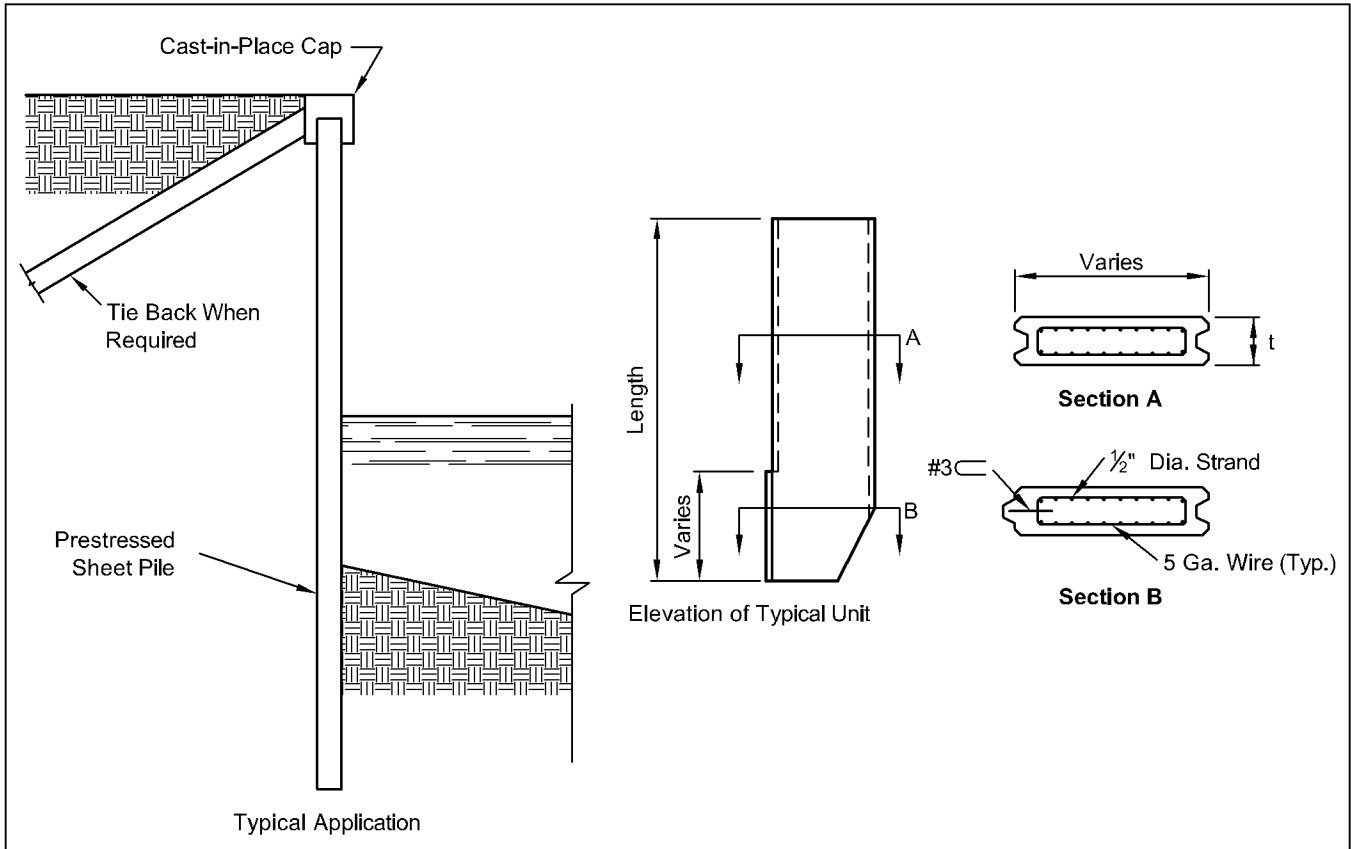


SHEET PILES

Table 2.8.2 Section properties and allowable service loads of prestressed sheet piles



THICKNESS t (in.)	SECTION PROPERTIES PER FOOT OF WIDTH				MAXIMUM ALLOWABLE SERVICE LOAD MOMENT ^b kip-ft per foot	
	AREA (in. ²)	WEIGHT ^a (psf)	MOMENT OF INERTIA (in. ⁴)	SECTION MODULUS (in. ³)	$f'_c = 5000$	$f'_c = 6000$
					(psi)	(psi)
6 ^c	72	75	216	72	6.0	7.2
8 ^c	96	100	512	128	10.6	12.8
10	120	125	1,000	200	16.6	20.0
12	144	150	1,728	288	24.0	28.8
16	192	200	4,096	512	42.7	51.2
18	216	225	5,832	648	54.0	64.8
20	240	250	8,000	800	66.7	80.0
24	288	300	13,824	1,152	96.0	115.2

- a. Normal weight concrete.
- b. Based on zero tension and maximum $0.4f'_c$ compression.
- c. Strand can be placed in a single layer in thin sections.
Where site conditions require it, strand may be placed eccentrically.