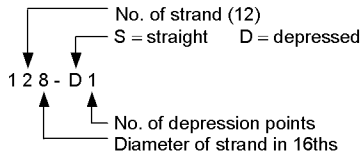


**Strand Pattern Designation**

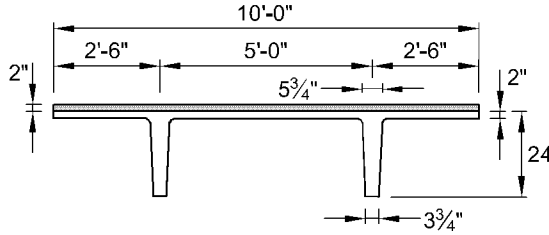


Safe loads shown include dead load of 10 psf for untopped members and 15 psf for topped members. Remainder is live load. Long-time cambers include superimposed dead load but do not include live load.

**Key**

- 171 – Safe superimposed service load, psf
- 0.6 – Estimated camber at erection, in.
- 0.8 – Estimated long-time camber, in.

**DOUBLE TEE**  
**10'-0" x 24"**  
**Normal Weight Concrete**



$f'_c = 5,000 \text{ psi}$   
 $f_{pu} = 270,000 \text{ psi}$

**Section Properties**  
**Untopped**      **Topped**

A =	449 in. <sup>2</sup>	–
I =	22,469 in. <sup>4</sup>	29,396 in. <sup>4</sup>
y <sub>b</sub> =	17.77 in.	19.89 in.
y <sub>t</sub> =	6.23 in.	6.11 in.
S <sub>b</sub> =	1,264 in. <sup>3</sup>	1,478 in. <sup>3</sup>
S <sub>t</sub> =	3,607 in. <sup>3</sup>	4,812 in. <sup>3</sup>
wt =	468 plf	718 plf
DL =	74 psf	72 psf
V/S =	1.35 in.	

**10DT24**

**Table of safe superimposed service load (psf) and cambers (in.)**

**No Topping**

Strand Pattern	y <sub>s</sub> (end) in. y <sub>s</sub> (center) in.	Span, ft																											
		30	32	34	36	38	40	42	44	46	48	50	52	54	56	58	60	62	64	66	68	70	72	74	76	78			
68-S	4.00	171	146	126	109	94	82	71	62	54	47	41	35	30	26														
	4.00	0.6	0.7	0.7	0.8	0.8	0.9	0.9	0.9	0.9	0.9	0.8	0.8	0.7	0.6														
88-S	5.00		193	167	146	127	112	98	87	77	68	60	53	47	41	36	32	27											
	5.00		0.9	1.0	1.1	1.1	1.2	1.3	1.3	1.4	1.4	1.4	1.4	1.3	1.3	1.2	1.0	0.9											
108-S	6.00				177	156	137	121	108	96	85	76	68	61	54	48	43	38	33	29									
	6.00				1.2	1.3	1.4	1.5	1.6	1.7	1.7	1.8	1.8	1.8	1.8	1.8	1.7	1.6	1.4	1.2									
128-S	7.00					159	141	125	112	100	90	80	72	64	58	52	46	41	36	31	26								
	7.00					1.6	1.7	1.8	1.9	1.9	2.0	2.0	2.1	2.1	2.1	2.1	2.0	1.9	1.8	1.6	1.4								
128-D1	11.67											100	90	80	72	64	57	51	46	41	37	33	30	26					
	3.25											2.3	2.4	2.5	2.5	2.5	2.5	2.4	2.3	2.2	2.0	1.8	1.5	1.2					
148-D1	12.86																	68	61	55	49	43	39	36	32	29			
	3.50																	2.9	2.9	2.9	2.8	2.7	2.6	2.4	2.1	1.8			

**10DT24 + 2**

**Table of safe superimposed service load (psf) and cambers (in.)**

**2 in. Normal Weight Topping**

Strand Pattern	y <sub>s</sub> (end) in. y <sub>s</sub> (center) in.	Span, ft																								
		30	32	34	36	38	40	42	44	46	48	50	52	54	56	58	60	62	64	66						
68-S	4.00	172	145	123	104	89	75	63	56	45	37	30														
	4.00	0.6	0.7	0.7	0.8	0.8	0.9	0.9	0.9	0.9	0.9	0.8														
88-S	5.00		197	169	145	125	108	93	83	69	60	51	43	34												
	5.00		0.9	1.0	1.1	1.1	1.2	1.3	1.3	1.4	1.4	1.4	1.4	1.3												
108-S	6.00				180	156	136	119	104	91	79	68	57	48	40	31										
	6.00				1.2	1.3	1.4	1.5	1.6	1.7	1.7	1.8	1.8	1.8	1.8	1.8										
128-S	7.00					160	141	124	109	93	79	68	58	48	40	33										
	7.00					1.6	1.7	1.8	1.9	1.9	2.0	2.1	2.1	2.1	2.1	2.1										
128-D1	11.67												92	79	67	57	47	39	32							
	3.25												2.3	2.4	2.5	2.5	2.5	2.5	2.5	2.4						
148-D1	12.86																		53	44	36					
	3.50																		2.9	2.9	2.9					

Strength is based on strain compatibility; bottom tension is limited to  $12\sqrt{f'_c}$ ; see pages 2-7 through 2-10 for explanation. Shaded values require release strengths higher than 3500 psi.