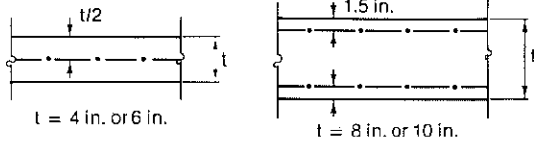


PRECAST, REINFORCED SOLID WALL PANELS

Fig. 2.6.6 Partial interaction curve for precast, reinforced concrete wall panels



Curves based on vertical reinforcement $\rho = 0.12\%$ (slightly more than the minimum of 0.001)
 $f'_c = 5000$ psi; $f_y = 60,000$ psi

t in.	Full interaction curve data			
	ϕP_o	ϕP_{nb}	ϕM_{nb}	ϕM_o
4	145	72	6.0	0.5
6	218	108	13.4	1.1
8	290	141	24.5	2.0
10	363	176	38.5	3.1

