

# 2000 PCI Design Awards Program

## The Winning Entries

Over 100 entries were judged for the 2000 PCI Design Awards Program, held May 19 in Chicago, Illinois. In the end, 17 entries received top honors. Entrants needed to show how they creatively used precast, prestressed concrete, glass fiber reinforced concrete and/or architectural precast concrete in their structure. Structures must have been completed within the past three years to be eligible in the program and have been built in the United States, Canada and Mexico.

There were five categories, each with several subcategories. The Commercial Buildings Category included office buildings, retail stores, mixed-use structures, public buildings, institutional buildings, schools and hospitals.

Warehouses, manufacturing facilities, food processing facilities, distribution centers and special industrial structures were included in the Industrial Structures Category.

The Housing Structures Category covered single-family homes, multi-family structures, hotels, motels, condominiums, retirement facilities, dormitories and assisted living centers.

The Specialized Structures Category included parking structures, stadiums, arenas, sports centers, tanks, justice facilities, jails, prisons and correctional facilities.

The Transportation Structures Category is also divided into subcategories to recognize the diversity of design possible using precast and prestressed concrete. The eight subcategories of this category are: soundwall projects, piling projects, rail depots, bridges with spans less than 65 ft (20 m); bridges with span lengths between 65 to 135 ft (20 to 41 m); bridges with span lengths greater

than 135 ft (41 m); rehabilitated bridges; and non-highway bridges.

As in the past, there are no first place winners. Instead, each winning project is given equal recognition in order to acknowledge the diversity of design solutions used by architects and engineers.

In addition, two entries received the Harry H. Edwards Industry Advancement Award, which is given "for those ideas and concepts that hold the potential to move the industry to the next generation of technology." A separate jury judged the projects considered for this award.

PCI extends its gratitude to each member of the 2000 Jury of Awards.

Jury members for the Commercial Buildings, Industrial Structures, Housing Structures and Specialized Structures categories were: (Co-Chairwoman) **Donna Robertson**, Dean of the College of Architecture, Illinois Institute of Technology; (Co-Chairman) **Eliseo Temprano**, Immediate Past President, RAIC; **Degan G. Hambacher**, president, FDG, Inc.; and **Chris Sullivan**, editor-in-chief, *Building Design & Construction*.

Jury members for the Transportation Structures category were: (Chairman) **David H. Densmore**, Chief of

Bridge Division, Federal Highway Administration; **Richard A. Miller**, Associate Professor, University of Cincinnati; and **William N. Nickas**, State Structure Design Engineer, Florida Department of Transportation.

Jury members for the Harry H. Edwards Industry Advancement Award were: (Chairman) **Harry A. Gleich**, Vice President of Engineering, Metromont Prestress Co.; and **Gerald E. Goettsche**, President, The Consulting Engineers Group, Inc.

Award winners received a special recognition at PCI's 46th Annual Convention & Exhibition in Orlando, Florida, during the Design Awards Dinner/Dance on Tuesday, September 26. Summary descriptions of the winning projects appear in the Fall 2000 issue of *ASCENT Magazine*. In addition, winning entries will receive extensive national publicity through major industry and architectural publications. The PCI JOURNAL will feature articles about some of the winning entries and other noteworthy entries throughout the year.

The credits for the winning projects are listed on the following pages. PCI extends congratulations to all those involved with these exemplary projects.

*The purpose of the Design Awards Program is to recognize design excellence in the use of precast, prestressed concrete and/or architectural precast concrete. The annual program is open to all registered architects and engineers practicing professionally or in government agencies in North America. Winners are chosen on the basis of exceptional achievement in aesthetic expression, function and economy, and ingenuity in the use of materials, methods and equipment. Please visit our website at [www.pci.org](http://www.pci.org) for more information.*

## 2000 Design Awards Program Judges



David H. Densmore



Gerald E. Goettsche



Donna Robertson

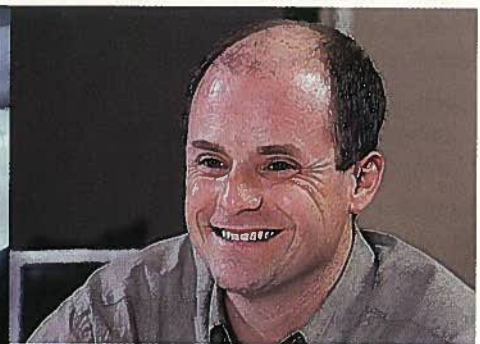


William N. Nickas



Eliseo Temprano

Degan G. Hambacher



Chris Sullivan



Harry A. Gleich



Richard A. Miller



**Winner**

**Correctional Facility (Low-Rise)**

**David L. Moss Criminal Justice Center  
Tulsa, Oklahoma**

**Entrant and Architect:**

BKL, Inc./HDR Architecture, Inc.  
Tulsa, Oklahoma

**Engineer:**

BKL, Inc.  
Tulsa, Oklahoma

**Precast Concrete Manufacturer:**

Coreslab Structures (Oklahoma), Inc.  
Oklahoma City, Oklahoma

**General Contractor:**

Hensel Phelps Construction Co.  
Cape Canaveral, Florida

**Owner:**

Tulsa County Criminal Justice Authority  
Tulsa, Oklahoma

**Winner**

**Correctional Facility (High-Rise)**

**Federal Metropolitan Detention Center  
Philadelphia, Pennsylvania**

**Entrant, Engineer and Architect:**

Ewing Cole Cherry Brott  
Philadelphia, Pennsylvania

**Precast Concrete Manufacturer:**

High Concrete Structures  
Denver, Pennsylvania

**General Contractor:**

Keating Building Corp.  
Bala Cynwyd, Pennsylvania

**Owner:**

U.S. Department of Justice  
Federal Bureau of Prisons  
Washington, D.C.

**Winner**

**Custom Solution**

**The Terraces at Riverfront Recapture  
Hartford, Connecticut**

**Entrant and Engineer:**

Brecher Associates P.C.  
Philadelphia, Pennsylvania

**Architects:**

Carol R. Johnson Associates  
Cambridge, Massachusetts

Goddes Brecher Qualls & Cunningham, Inc.  
Philadelphia, Pennsylvania

**Precast Concrete Manufacturer:**

Blakeslee Prestress, Inc.  
Branford, Connecticut

**General Contractor:**

O & G Industries, Inc.  
Torrington, Connecticut

**Project Manager:**

Connecticut Department of Transportation  
Newington, Connecticut

**Owner:**

Riverfront Recapture, Inc.  
Hartford, Connecticut

**Winner**

**Hotel**

**Hilton Boston-Logan Airport  
Boston, Massachusetts**

**Entrant and Architect:**

Cambridge Seven Associates, Inc.  
Cambridge, Massachusetts

**Engineer:**

Weidlinger Associates, Inc.  
Cambridge, Massachusetts

**Precast Concrete Manufacturers:**

Béton Préfabriques Du Lac, Inc.  
Alma, Quebec, Canada  
Northeast Concrete Products LLC  
Plainville, Massachusetts

**General Contractor:**

Beacon Skanska Construction Co.  
East Boston, Massachusetts

**Owner:**

Hilton Hotels Corporation  
Beverly Hills, California

**Winner**

**Office Building (Low-Rise)**

**Merrill Lynch Facility  
Englewood, Colorado**

**Entrant and Architect:**

Thompson, Ventulett, Stainback & Associates  
Atlanta, Georgia

**Engineer:**

W.P. Moore and Associates, Inc.  
Atlanta, Georgia

**Precast Concrete Manufacturer:**

Rocky Mountain Prestress, Inc.  
Denver, Colorado

**General Contractor:**

Huber, Hunt & Nichols, Inc.  
Branch Burg, New Jersey

**Owner:**

Merrill Lynch Denver Holdings, Inc.  
Plainsboro, New Jersey

**Winner**

**Office Building (High-Rise)**

**IJL Financial Center  
Charlotte, North Carolina\***

**Entrant and Architect:**

Smallwood, Reynolds, Stewart,  
Stewart & Associates, Inc.  
Atlanta, Georgia

**Engineer:**

Stanley D. Lindsey & Associates Ltd.  
Atlanta, Georgia

**Precast Concrete Manufacturer:**

Metromont Prestress Co.  
Greenville, South Carolina

**General Contractor:**

Beers Construction Co.  
Atlanta, Georgia

**Owner:**

Bank of America  
Charlotte, North Carolina

\*A detailed article on this project was published in the May-June 2000 PCI JOURNAL.

## Co-Winner

### Parking Structure

#### **MacArthur Center North and South Parking Structures Norfolk, Virginia**

**Entrant and Architect:**

Hobbs & Black Associates, Inc.  
Ann Arbor, Michigan

**Design Architect:**

Brown/McDaniel/Bhandari, Inc.  
San Francisco, California

**Engineer:**

E & S Mechanical Services  
Pasadena, Maryland

**Precast Concrete Manufacturers:**

Tindall Corporation – Virginia Division  
Petersburg, Virginia

Gate Concrete Products Company  
Oxford, North Carolina

**General Contractor:**

Sordoni Skanska Construction Co.  
Parsippany, New Jersey

**Owners (Joint Venture):**

Taubman Realty Group  
Bloomfield Hills, Michigan

The Conroy Development Company  
Greenwich, Connecticut

## Winner

### Retail Building

#### **Lazarus Department Store Pittsburgh, Pennsylvania\***

**Entrant and Architect:**

Cooper Carry  
Atlanta, Georgia

**Structural Engineer:**

Structural Engineering Corp.  
Pittsburgh, Pennsylvania

**Precast Concrete Manufacturer:**

Modern Mosaic Ltd.  
Niagara Falls, Ontario, Canada

**General Contractor:**

Turner Construction Co.  
Pittsburgh, Pennsylvania

**Owner:**

Federated Department Stores  
Cincinnati, Ohio

## Co-Winner

### Parking Structure

#### **Sun Trust Plaza Parking Structure Winter Park, Florida**

**Entrant and Architect:**

Rich & Associates, Inc.  
Southfield, Michigan

**Design Architect:**

RTKL Associates, Inc.  
Baltimore, Maryland

**Engineer:**

Rich and Associates, Inc.  
Tampa, Florida

**Precast Concrete Manufacturer:**

Finrock Industries, Inc.  
Orlando, Florida

**General Contractor:**

Jack Jennings & Sons  
Orlando, Florida

**Owner:**

Rollins College  
Winter Park, Florida

## Winner

### Stadium

#### **Princeton University Stadium Princeton, New Jersey†**

**Entrant and Architect:**

Raphael Viñoly Architects  
Minneapolis, Minnesota

**Engineer:**

Thornton-Tomasetti Engineers  
New York, New York

**Precast Concrete Manufacturer:**

Metromont Prestress Co.  
Greenville, South Carolina

**General Contractor:**

Turner Construction Co.  
Philadelphia, Pennsylvania

**Owner:**

Princeton University  
Princeton, New Jersey

## Winner

### Public Building

#### **Center of Science & Industry (COSI) Columbus, Ohio†**

**Entrant and Lead Architect:**

NBBJ Architects, Inc.  
Columbus, Ohio

**Design Architect:**

Arata Isozaki & Associates  
Tokyo, Japan

**Engineer:**

Korda-Nemeth Engineering, Inc.  
Columbus, Ohio

**Precast Concrete Manufacturers:**

Concrete Technology, Inc.  
Springboro, Ohio

Marietta Structures Corp.  
Marietta, Ohio

**Construction Manager:**

Ruscilli Construction Co.  
Columbus, Ohio

**Owner:**

Center of Science & Industry  
Columbus, Ohio

## Winner

### Warehouse

#### **Park Fletcher Building #40 Indianapolis, Indiana**

**Entrant and Architect:**

Ratio Architects, Inc.  
Indianapolis, Indiana

**Engineer:**

Smith Roberts & Associates  
Indianapolis, Indiana

**Precast Concrete Manufacturer:**

Spancrete Industries, Inc.  
Waukesha, Wisconsin

**General Contractor:**

Duke-Weeks Realty Corp.  
Indianapolis, Indiana

**Owner:**

Duke-Weeks Realty Corp.  
Indianapolis, Indiana

\*A detailed article on this project appears in this issue of the PCI JOURNAL.

†For more information on these projects, see articles in the September-October and May-June 1999 issues of the PCI JOURNAL, respectively.

**Winner**

Bridge Span  
Less than 65 ft (20 m)

**U.S Route 3A over  
Newfound River  
Bristol, New Hampshire**

**Entrant and Engineer:**

New Hampshire Department of  
Transportation  
Concord, New Hampshire

**Precast Concrete Manufacturer:**

Northeast Concrete Products LLC  
Plainville, Massachusetts

**General Contractor:**

R.S. Audley Construction  
Bow, New Hampshire

**Owner:**

New Hampshire Department of  
Transportation  
Concord, New Hampshire

**Winner**

Non-Highway Bridge

**Metropolitan Line B Stations  
Mexico City, Mexico**

**Entrant, Engineer and Architect:**

Rioboo, S.A. de C.V.  
Mexico City, Mexico

**Precast Concrete Manufacturer:**

Pretencreto  
Mexico City, Mexico

**General Contractor:**

Ingenieros Civiles Asociados (ICA)  
Mexico City, Mexico

**Owner:**

Secretaria de Obras de Distrito Federal  
Mexico City, Mexico

**Winner**

Bridge Span  
of 65 to 135 ft (20 to 41 m)

**King Avenue over the  
Olentangy River  
Columbus, Ohio**

**Entrant and Engineer:**

HNTB Corporation  
Kansas City, Missouri

**Engineer:**

Eriksson Engineering  
Columbus, Ohio

**Precast Concrete Manufacturer:**

Tecspan Concrete Structures, Inc.  
Grove City, Ohio

**General Contractor:**

C.J. Mahan Construction  
Grove City, Ohio

**Owner:**

Franklin County, Ohio  
Columbus, Ohio

**Winner**

Hotel

**Route 7 Bridge over Route 50  
Fairfax County, Virginia**

**Entrant and Engineer:**

Wilbur Smith Associates  
Falls Church, Virginia

**Precast Concrete Manufacturer:**

Bayshore Concrete Products Corp.  
Cape Charles, Virginia

**General Contractor:**

Corman Construction  
Annapolis, Maryland

**Owner:**

Virginia Department of Transportation  
Fairfax, Virginia

**Winner**

Bridge Span  
Greater than 135 ft (41 m)

**H-3/Lower Halawa Valley  
Viaduct; Unit 1, Phase 1B  
Aiea, Hawaii**

**Entrant and Engineer:**

T.Y. Lin International  
San Francisco, California

**Precast Concrete Manufacturer:**

Con-Fab California Corp.  
Lathrop, California

**General Contractor:**

Kiewit Pacific Co.  
Vancouver, Washington

**Owner:**

Hawaii Department of Transportation  
Honolulu, Hawaii



# Harry H. Edwards Industry Advancement Award Winners

## Public Building

### **Center of Science & Industry (COSI) Columbus, Ohio\***

**Entrant and Lead Architect:**

NBBJ Architects, Inc.  
Columbus, Ohio

**Design Architect:**

Arata Isozaki & Associates  
Tokyo, Japan

**Engineer:**

Korda-Nemeth Engineering, Inc.  
Columbus, Ohio

**Precast Concrete Manufacturer:**

Concrete Technology, Inc.  
Springboro, Ohio

Marietta Structures Corp.  
Marietta, Ohio

**Construction Manager:**

Ruscilli Construction Co.  
Columbus, Ohio

**Owner:**

Center of Science & Industry  
Columbus, Ohio

## Stadium

### **Princeton University Stadium Princeton, New Jersey\***

**Entrant and Architect:**

Raphael Viñoly Architects  
Minneapolis, Minnesota

**Engineer:**

Thornton-Tomasetti Engineers  
New York, New York

**Precast Concrete Manufacturer:**

Metromont Prestress Co.  
Greenville, South Carolina

**General Contractor:**

Turner Construction Co.  
Philadelphia, Pennsylvania

**Owner:**

Princeton University  
Princeton, New Jersey

\*For more information on these projects,  
see articles in September-October and  
May-June 1999 PCI JOURNAL,  
respectively.