

THE VICTOR

Boston, MA

ARCHITECT
ADD, Inc.,
Boston, MA

ENGINEER
Namara/Salvia
Boston, MA

CONTRACTOR
Suffolk Construction
Boston, MA

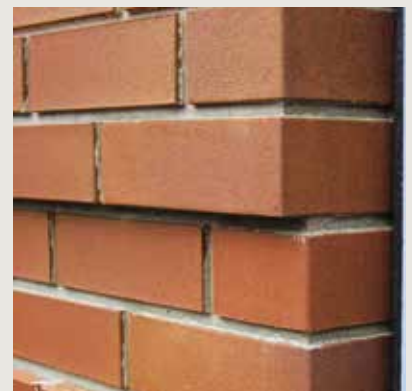
PRECASTER
Coreslab Structures, (Conn) Inc.
Thomaston, CT

PROJECT FACTS

- **BUILDING:**
 - SQ. FOOTAGE: 377,000 (RESIDENTIAL TOWER)
 - 17,000 (RETAIL SPACE)
 - 3-STORY ABOVE GRADE PARKING GARAGE (138 SPACES)
 - LEVELS/FLOORS: 12 (288 APARTMENT UNITS)

PRECAST STRUCTURAL ELEMENTS INCLUDE:

- 750 pieces (74,000 sq. ft.) of finished Architectural Precast cladding panels with thin brick and textured concrete finishes.



Photos courtesy of Coreslab Structures, (Conn) Inc.

Ground breaking for The Victor has begun and soon Boston will have a new, 12-story, LEED Silver certified precast concrete residential building with parking and retail space. The 377,000 sq. ft., 288 apartment residential building will also have a 3-level, 138 space above grade parking garage and 17,000 sq. ft. of retail space.

The project will include 750 pieces of Architectural Precast cladding panels with both brick and textured concrete produced by Coreslab Structures, (Conn) Inc. Precast panels offer LEED credits as well as cost savings with its rapid construction and low maintenance.

The \$97 million dollar project will be built partially over two tunnels and will include 2 rooftop lounges and a health club.